



National Civil Applications Program

Background

The National Civil Applications Program (NCAP) is a component of the U.S. Geological Survey's (USGS) Mapping, Remote Sensing, and Geographic Investigations Program. The NCAP serves Federal civil agencies by providing for the acquisition, dissemination, and exploitation of classified remote sensing systems and data in support of mission responsibilities for land and resource management, environmental and scientific studies, homeland security, and hazards/disaster management.

Civil applications of classified remotely sensed imagery began in 1969 when the USGS provided Federal civil agencies with access to imagery for various uses, including mapping, charting, geodesy, and management of the Nation's lands and resources. The Civil Applications Committee (CAC) was established in 1975 to provide oversight and coordination of these activities. The CAC is composed of 11 Federal departments and independent agencies. The USGS, through the Secretary of the Interior, is delegated responsibility to chair the CAC.

The use of classified remotely sensed data has increased dramatically over the past 10 years. There has been an expanded emphasis on using data for environmental monitoring and research and for hazards detection, warning, and emergency response. To address the growing requirements and better serve the Federal civil community, the USGS expanded its investment in NCAP facilities and infrastructure during the 1990s. The USGS Advanced Systems Center (ASC) in Reston, Va., was built in 1993 and serves as the hub of NCAP operations. The USGS operates regional facilities in Denver, Colo.; Rolla, Mo.;

Sioux Falls, S. Dak.; and Menlo Park, Calif. An interagency NCAP facility is located in Anchorage, Alaska. Each USGS facility provides the infrastructure, systems, and expertise required to support the growing diversity of civil applications.

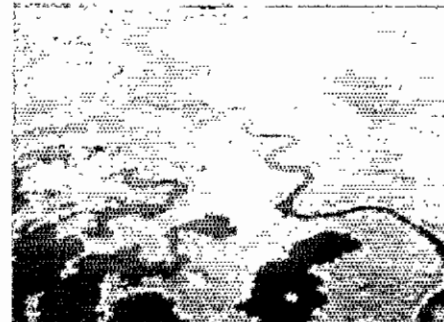
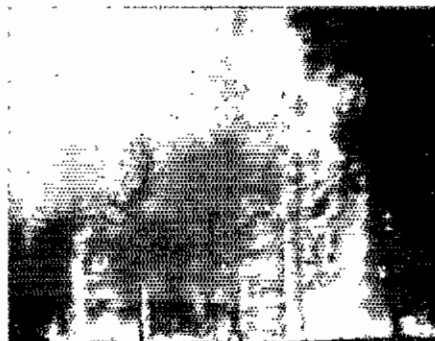
Customers

Customers of the NCAP are the USGS science programs and other Federal civil agencies that are members of, or partners with, the CAC. The customer base is becoming broader, and demand for NCAP products and services is increasing as restrictions on the use and distribution of classified data are reduced and as the use of imagery derived products increases.

Key NCAP Components

Imagery Derived Product (IDP) - Unique products created with classified data supporting broad science mission responsibilities of the USGS, the Department of the Interior, and other civil agencies. Literal IDPs are image-like products, such as orthophotoquadrangles. Nonliteral IDPs are graphic products, such as maps, line drawings, graphs, or statistical data.

Global Fiducials Library (GFL) - A long-term archive of classified remotely sensed data for more than 500



environmentally sensitive sites worldwide to support global change research.

Rapid Exploitation System (REx) - State-of-the-art image processing and geographic information system hardware and software to provide end-to-end data processing, including the ingestion of a variety of data from different systems and the generation of custom IDPs.

Digital Cartographic Production System (DCPS) - A system that uses remotely sensed data to produce USGS digital orthophotoquadrangle data that support the revision of USGS mapping products.

Services and Support

- Capabilities to search archives for existing classified source materials and to initiate tasking requests for new coverage.
- Collection management services, including assisting CAC member agencies with defining their data requirements, tasking for classified data, performing quality assurance checks on received data, disseminating data to the customer, and archiving source data.
- CAC Secretariat support for monthly meetings, technical and policy

guidance for CAC members, development and distribution of informational materials, and representation at various civil, military, and intelligence forums.

- Security indoctrination and technical training for civil community scientists and specialists.
- Investigation, development, and integration of new systems and prototyping of new derivative products.
- Data exploitation services that include data analysis and the generation of custom IDPs.
- Operation of USGS secure facilities nationwide.

Contacts

Wendy A. Budd
Manager, National Civil Applications
Program
U.S. Geological Survey, MS 517
12201 Sunrise Valley Drive
Reston, VA 20192
Phone: 703-648-4786
Fax: 703-648-5939
E-mail: wbudd@usgs.gov

Information

For information on other USGS products and services, call 1-888-ASK-USGS or visit the general interest publications Web site on mapping, geography, and related topics at mac.usgs.gov/mac/isb/pubs/publists/.

For additional information, visit the ask.usgs.gov Web site or the USGS home page at www.usgs.gov.

