

SECRET

Approved For Release 2000/06/30 : CIA-RDP78B04560A001900010052-8

PIR

PHOTOGRAPHIC INTERPRETATION REPORT



SAVAGE, SCRAG, AND SCAMP MISSILES, MOSCOW PARADE, 9 MAY 1965

NPIC/R-292/65
SEPTEMBER 1965

Approved For Release 2000/06/30 : CIA-RDP78B04560A001900010052-8

SECRET

NOT TO BE RELEASED FROM
AUTOMATIC DOWNGRADING
AND DECLASSIFICATION

WARNING

This document contains information affecting the national defense of the United States, within the meaning of Title 18, sections 793 and 794, of the U.S. Code, as amended. Its transmission or revelation of its contents to or receipt by an unauthorized person is prohibited by law.

~~SECRET~~

NPIC/R-292/65

PHOTOGRAPHIC INTERPRETATION REPORT

**SAVAGE, SCRAG,
AND SCAMP MISSILES,
MOSCOW PARADE, 9 MAY 1965**

SEPTEMBER 1965

NATIONAL PHOTOGRAPHIC INTERPRETATION CENTER

~~SECRET~~

SECRET

NPIC/R-292/65

This report has been prepared in response to CIA requirement C-S15-82,589, which requests mensuration and line drawings of the 2 new Soviet ICBMs and the new, self-propelled surface-to-surface missile (SSM) photographed in the Moscow parade of 9 May 1965. Two of each of the 3 missiles were displayed in the parade. The missiles have been designated SAVAGE, SCRAG, and SCAMP, respectively.

The mensural data contained in this report were obtained from analytical and graphical photographic solutions coupled with scaling and ratio techniques. Because of the geometrical problems involved in mensural analysis of oblique ground photography, some degree of error is inherent in resulting measurements. All dimensions are carried to the one-hundredth part of a foot, but the reader is cautioned that the degree of accuracy is not that reliable. A general guide for determining the degree of confidence that can be placed in the dimensions given for the 3 missiles is as follows:

Missile	Degree of Accuracy
SAVAGE	[REDACTED]
SCRAG	
SCAMP	

The reader is further cautioned that the drawings on which the mensural data appear are not intended to be used for detailed engineering analysis.

The SAVAGE (Figures 1-3) is a 3-stage, probably solid-fuel, ICBM. Its overall length is [REDACTED]. The diameter of the first stage is [REDACTED], the second stage is [REDACTED] feet in diameter, and the third stage is [REDACTED] feet in diameter. The reentry vehicle is [REDACTED] feet long and [REDACTED] feet in diameter. The SCRAG

(Figures 4-6) is a 3-stage, liquid-propelled, ICBM. Its overall length is [REDACTED]. The diameter of the first and second stages is [REDACTED] and the third stage is [REDACTED] in diameter. The reentry vehicle, which projects slightly from a tapered guidance section, is [REDACTED] feet long and [REDACTED] feet in diameter at the base. The interstage connection on both the SAVAGE and the SCRAG is an open-lattice-type structure. It is possible, therefore, to observe interstage detail and engine nozzles. The SCAMP (Figures 7-9) is a self-propelled SSM. The actual missile is inside a closed pod or canister which is hinged along its long axis. This canister is [REDACTED] feet long and appears oval in cross section. The tracked carrier is [REDACTED] feet long and the length of the entire assembly, including the flame deflector, is [REDACTED] feet.

The same-model diesel-powered prime mover was used to pull both ICBMs. It is similar to the prime mover that was used to tow GALOSH and SASIN missiles previously displayed. The prime mover has steerable tandem axles under the cab and fixed tandem axles at the rear and measures [REDACTED] overall. The transporter used for the SAVAGE has tandem axles toward the rear and a single axle in front. All the wheels are single rather than dual. The missile is cradled on the trailer and secured at the after end and at the break between the second and third stages. The third stage is not supported. The SCRAG missile is cradled on a transporter that has a single axle at each end with dual wheels. Neither transporter appears capable of erecting the missile.

25X1D
25X1D
25X1D
25X1D
25X1D

25X1D
25X1D
25X1D

25X1D
25X1D

25X1D

25X1D
25X1D
25X1D - 1 -

SECRET

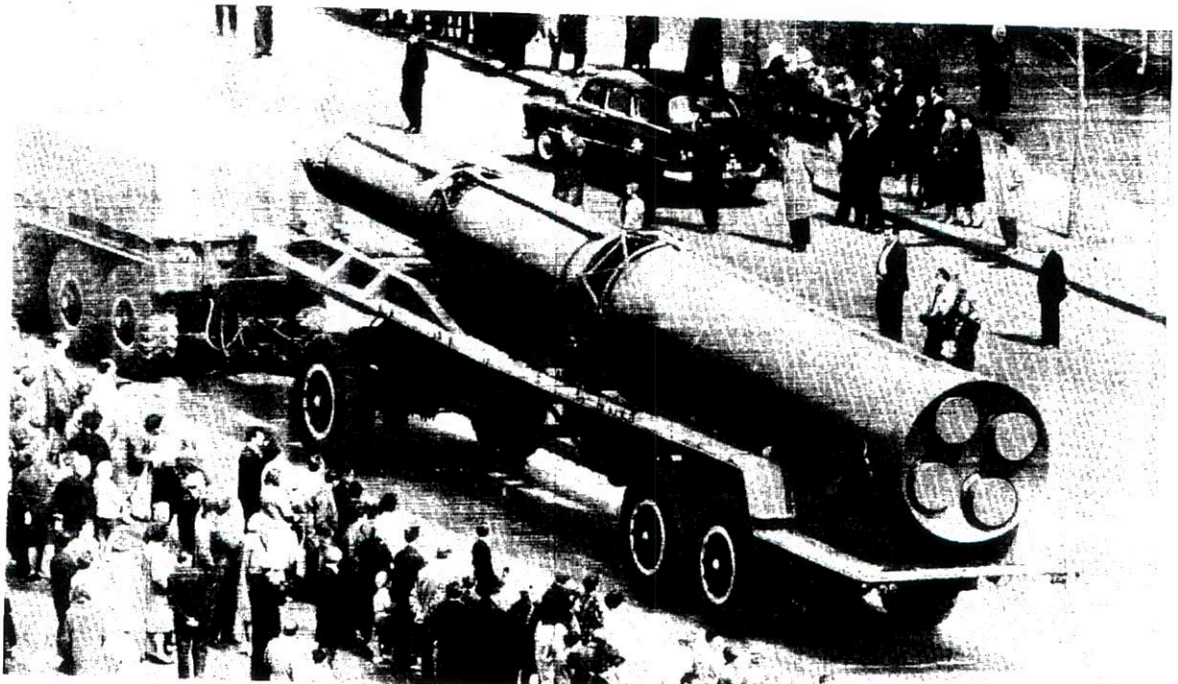
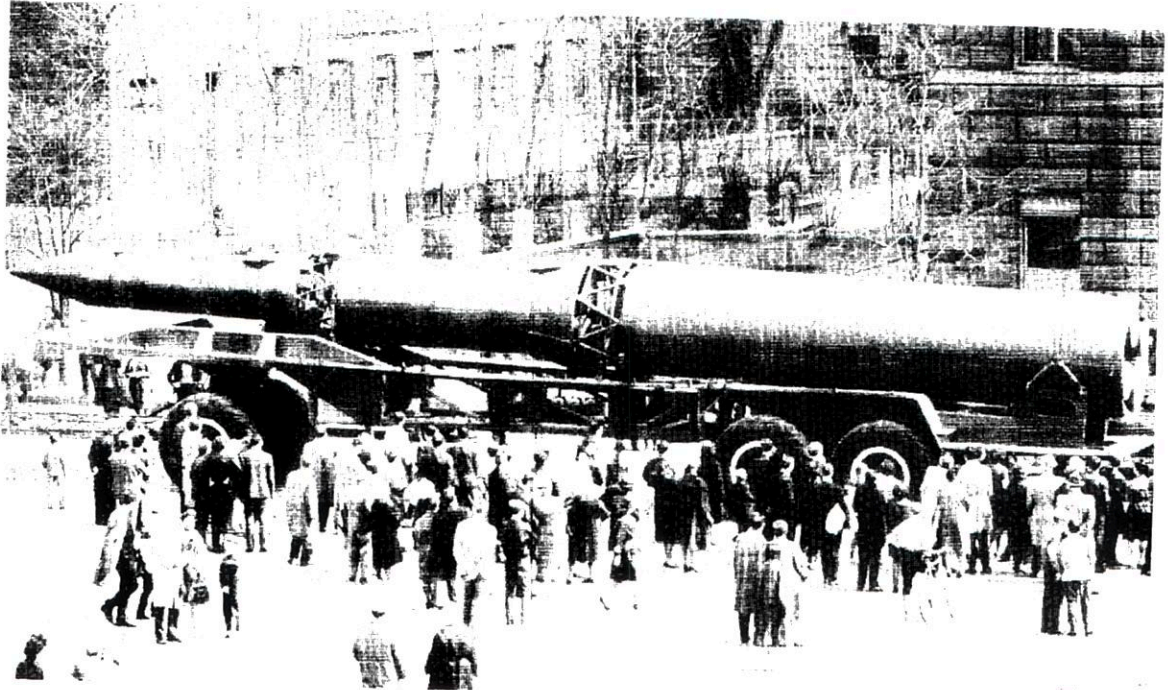


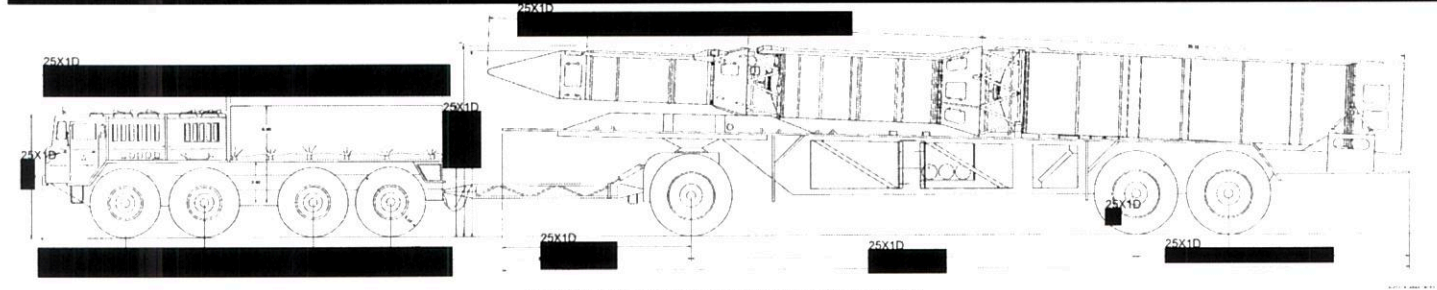
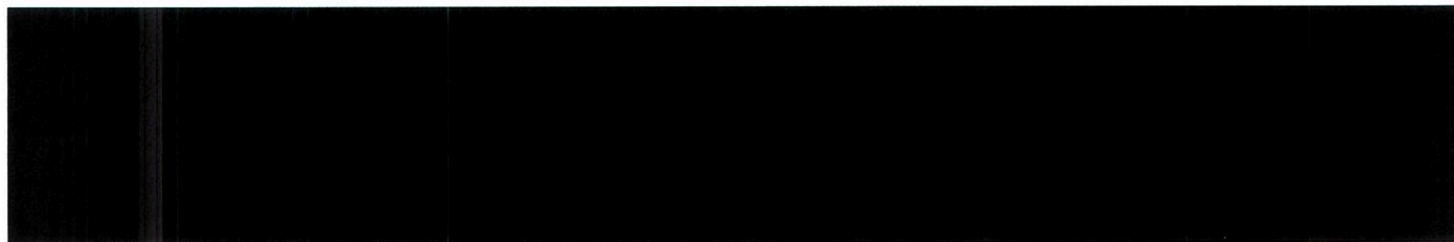
FIGURE 1. SAVAGE MISSILE ON PARADE, 9 MAY 1965.

NPIC K-4683 (9/65)

25X1D

Approved For Release 2000/06/30 : CIA-RDP78B04560A004900010052-8

NPAC/R-292/85



25X1D

FIGURE 2. SIDE VIEWS OF SAVAGE MISSILE, TRANSPORTER, AND PRIME MOVER AND REAR VIEW OF MISSILE BOOSTER

SECRET

SECRET

NPIC/R-292/65

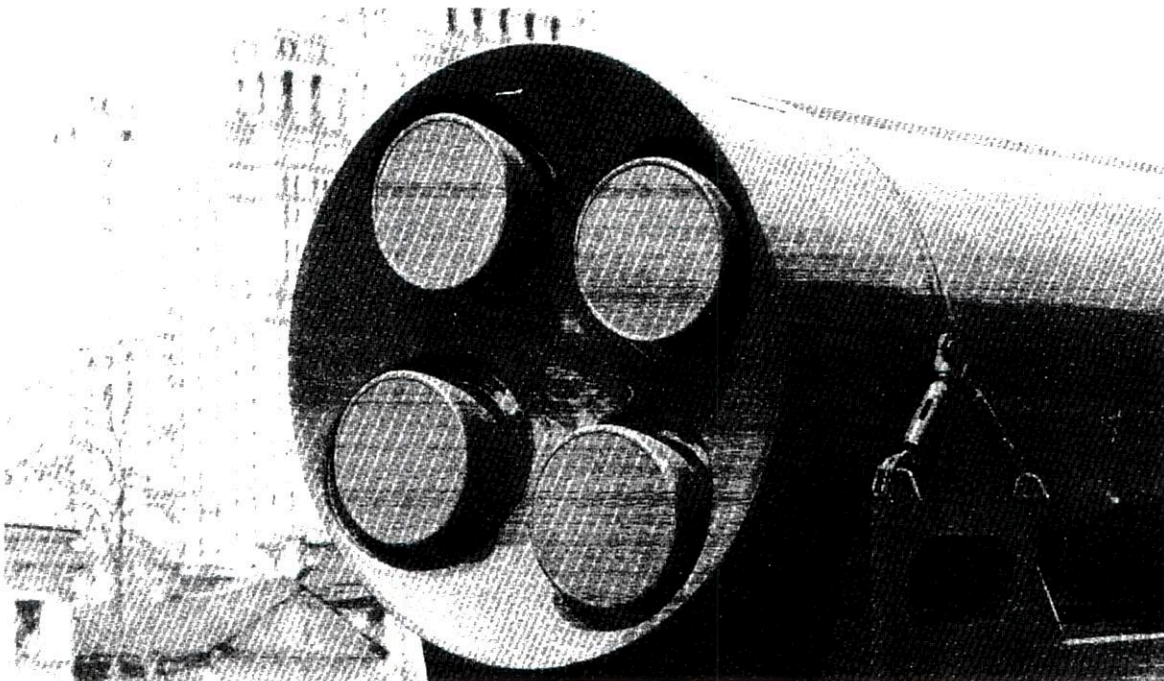


FIGURE 3. PRIME MOVER TOWING SAVAGE AND VIEW OF SAVAGE BOOSTER.

NPIC X-4685 (9/65)

SECRET

SECRET

NDIC/R 292/65

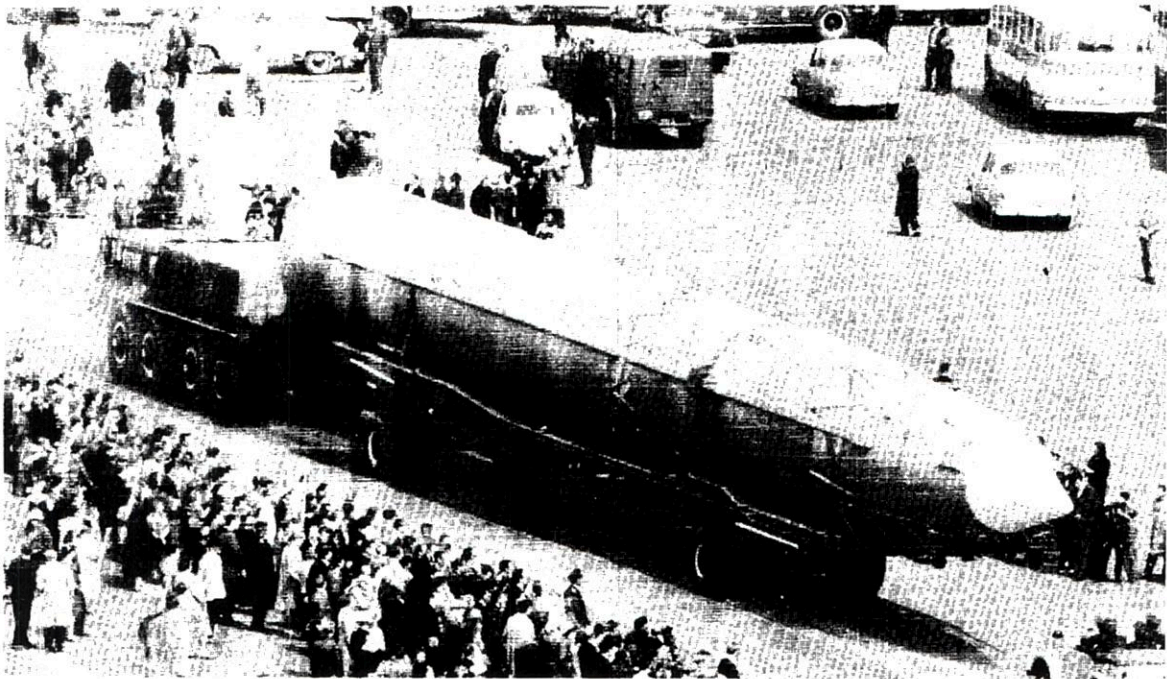
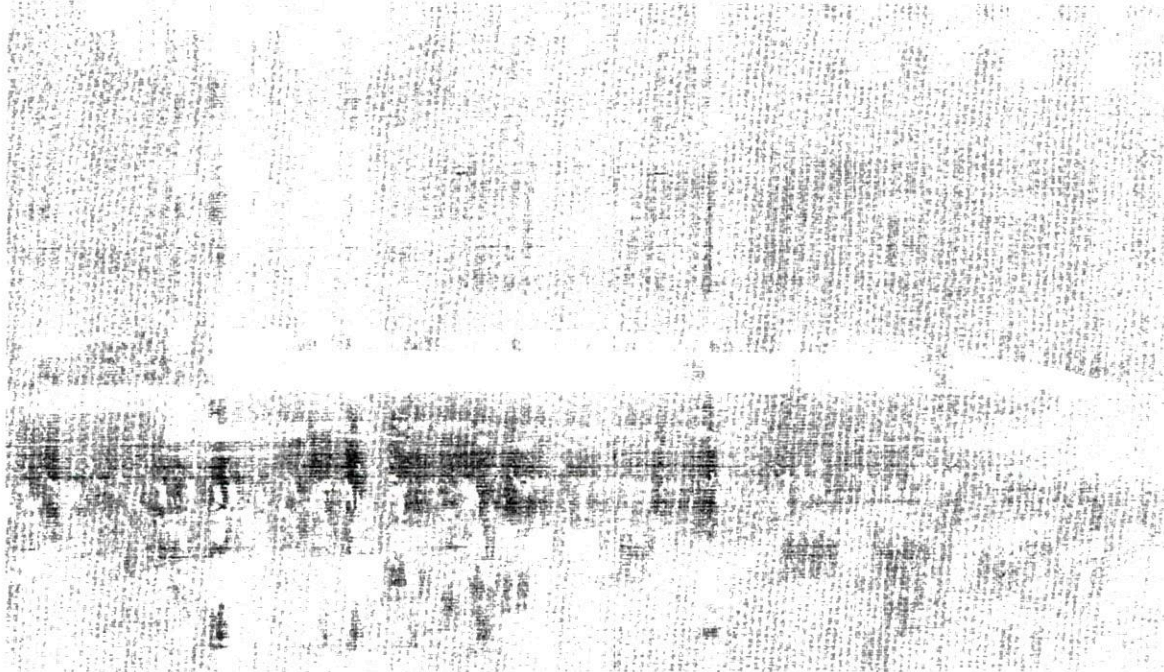


FIGURE 4. SCRAM MISSILE ON PARADE, 9 MAY 1965.

NPIC K-4086 (9/05)

SECRET

25X10

Approved For Release 2000/06/30 : CIA-RDP78B04560A004900010052-8

Approved For Release 2000/06/30 : CIA-RDP78B04560A004900010052-8

SECRET

NPIC/R-292/65

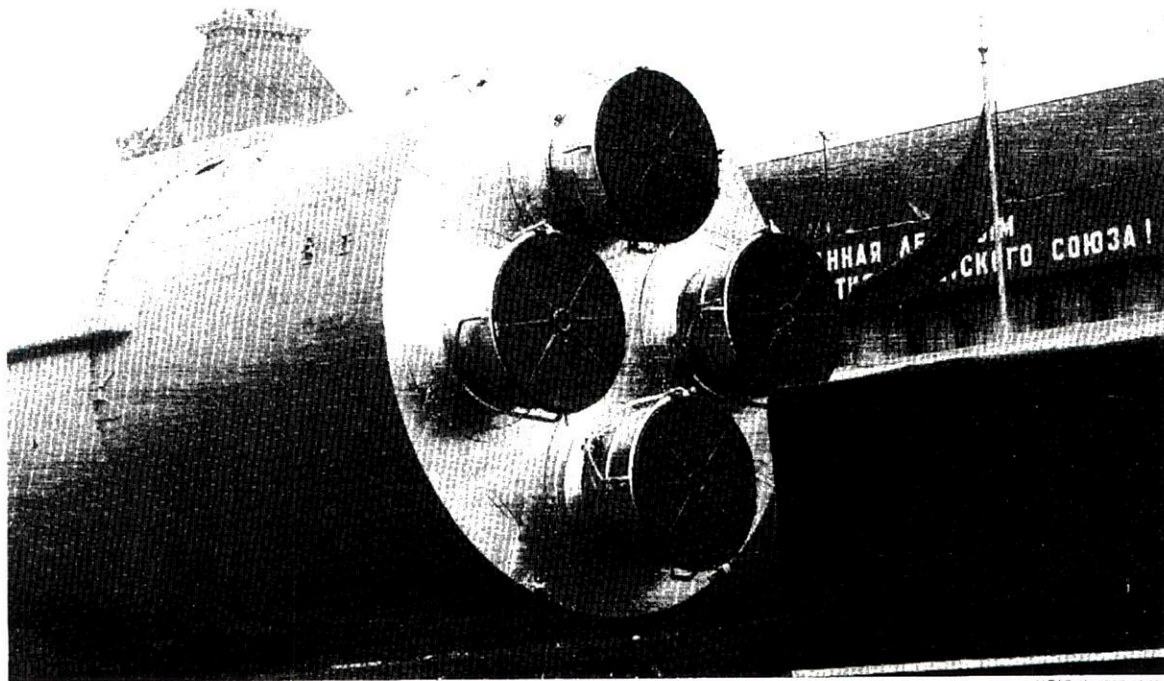
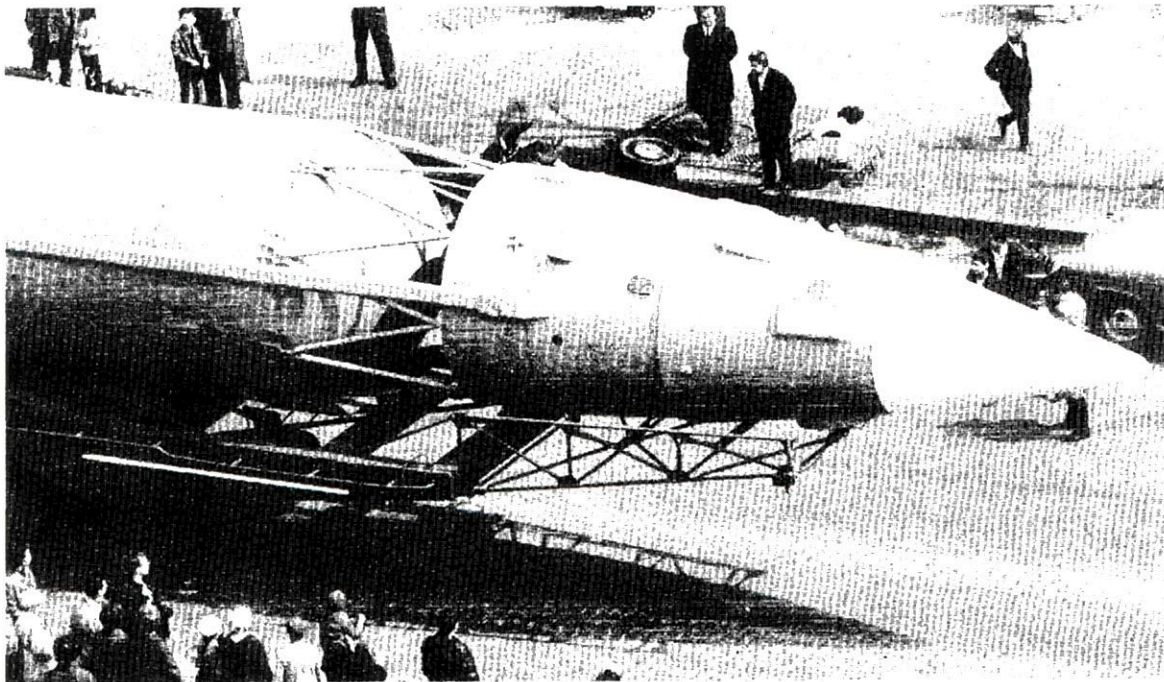


FIGURE 6. PARTIAL VIEWS OF SCRAG.

NPIC K-4688 (9/65)

SECRET

SECRET

NPIC ID: 89265

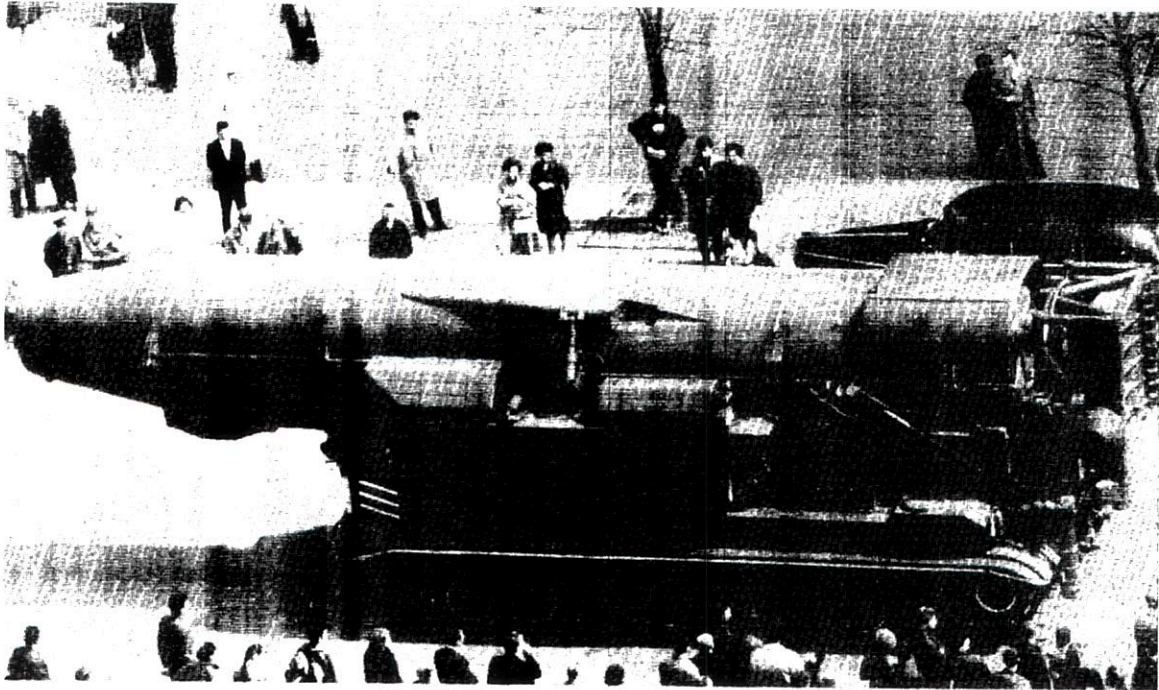


FIGURE 7. SCAMP MISSILE ON PARADE, 9 MAY 1965.

NPIC K-4689 (9/66)

SECRET

25X1D

Approved For Release 2000/06/30 : CIA-RDP78B04560A004900010052-8

Approved For Release 2000/06/30 : CIA-RDP78B04560A004900010052-8

SECRET

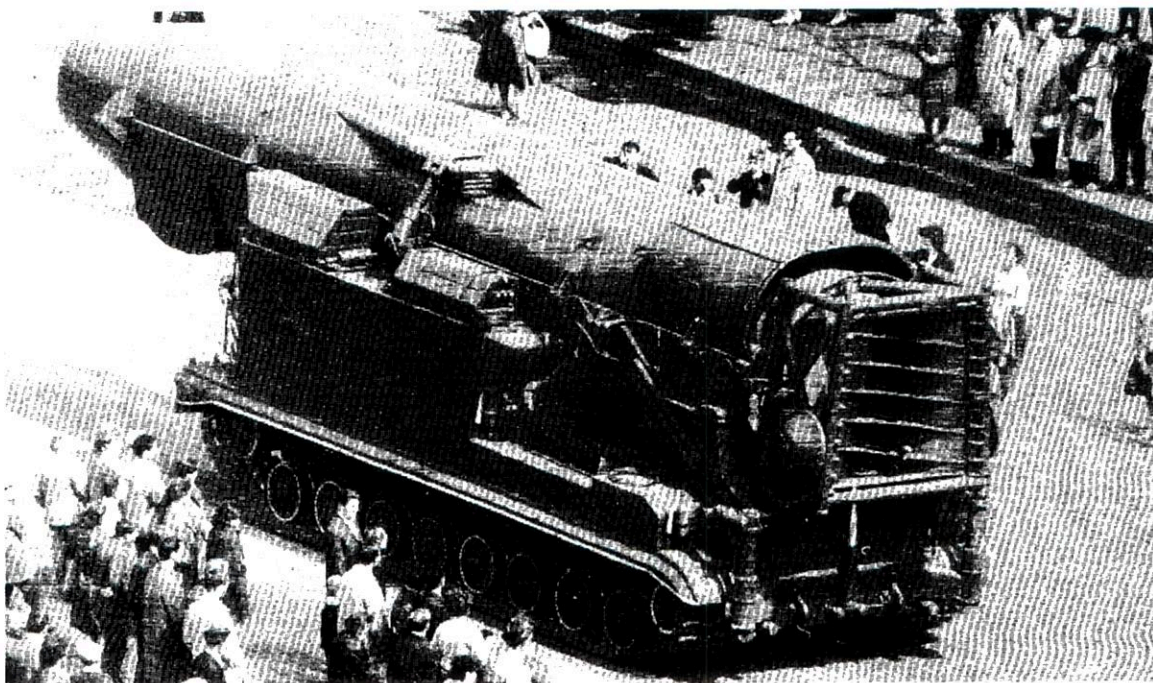
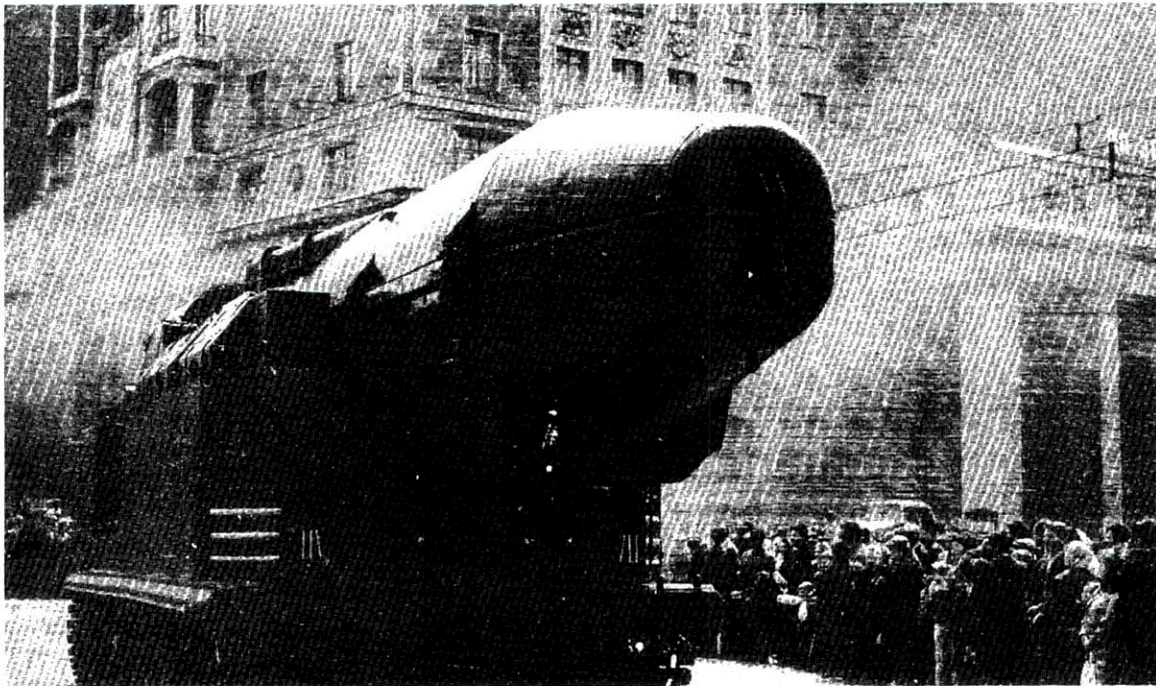


FIGURE 9. OTHER VIEWS OF SCAMP ASSEMBLY.

NPIC K-4691 (9/65)

SECRET

REFERENCES

PHOTOGRAPHY

25X1D

██████████ photography of 9 May 1965 (CONFIDENTIAL)

REQUIREMENT

CIA. C-SI5-82,589

NPIC PROJECT

11339/65

Approved For Release 2000/06/30 : CIA-RDP78B04560A004900010052-8

SECRET

Approved For Release 2000/06/30 : CIA-RDP78B04560A004900010052-8

SECRET

**NATIONAL
SECURITY
ARCHIVE**

This document is from the holdings of:

The National Security Archive

Suite 701, Gelman Library, The George Washington University

2130 H Street, NW, Washington, D.C., 20037

Phone: 202/994-7000, Fax: 202/994-7005, nsarchiv@gwu.edu