

**Secret**



DIRECTORATE OF  
INTELLIGENCE

# *Imagery Analysis Report*

Engineering Dimensions of the Guideline Mod 4 Missile

**Secret**

Declass Review by NIMA/DOD

DDI/IAR 91002

DATE Jul 68

Approved For Release 2003/08/05 : CIA-RDP02T06408R000400010059-2

**WARNING**

This document contains information affecting the national defense of the United States, within the meaning of Title 18, sections 793 and 794, of the US Code, as amended. Its transmission or revelation of its contents to or receipt by an unauthorized person is prohibited by law.

Approved For Release 2003/08/05 : CIA-RDP02T06408R000400010059-2

SECRET

Approved For Release 2003/08/05 : CIA-RDP02T06408R000400010059-2

DDI/IAR-91002  
July 1968

25X1

ENGINEERING DIMENSIONS OF THE GUIDELINE

MOD 4 MISSILE

INTRODUCTION

In the November 1967 Moscow Parade, the Soviets displayed a new version of the Guideline missile. The missile is substantially different than previous models, and has been designated Guideline Mod 4.

This report presents detailed dimensions for Guideline Mod 4, a description of the configuration, and a brief description of the NPIC Metrical Trap program and the Motion and Shear mensuration reduction procedures on which the dimensions are based.

MENSURATION

The mensuration in this report contains sufficient detail to permit construction of engineering models of the missile. Overall dimensions are shown in Figures 3 and 4. Individual components have been annotated with a circled number indicating the subsequent figure where detailed dimensions are shown for that component. The locations of all weld seams which could be identified are shown in Figure 4.

Mensuration is not presented for the external hatches on the missile. Although the locations shown are considered accurate, there was not sufficient photography, particularly of the left side of the missile, to determine the complete configuration of many hatches or even to insure that all hatches were identified.

CONFIGURATION

The overall appearance of Guideline Mod 4 differs considerably from that of previous Guidelines. Certain sections of this missile, however, are very similar, if not identical, to the external appearance of Guideline Mod 3.

The Mod 4 missile is 37.34 feet in length, compared to 35.41 feet for the Mod 3 and 34.84 feet for the Mod 1/2. The body diameter is 1.642 feet, the same as for previous models.

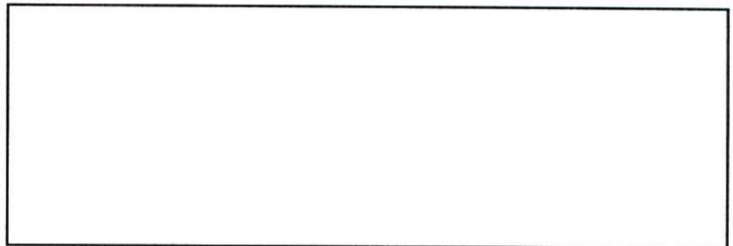
The booster seen on Guideline Mod 4 is the same size and appears very similar to the booster seen on the Mod 3 missile. The aft end of the sustainer, including the thrust structure and the area forward to the control surfaces, is very similar in size and appearance to that of the Mod 3 missile. The external piping and fairings are also placed similarly.

There are major differences in configuration forward of the control surfaces. The Mod 4 missile has no canard surfaces, a feature that is characteristic of all previous models. It has a large, slightly bulbous nose section which is wrapped or coated with white material, possibly fiberglass or a similar substance. The linear antennae located forward of the wings on Guideline Mod 3 are not present on the Mod 4 missile.

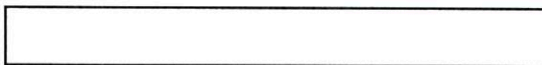
The sustainer main wings on Guideline Mod 4 are of considerable interest. The wings are larger than those of Mod 3 and are asymmetrical in configuration, although they are set in a

cruciform pattern. The two upper wings, as the missile rests on the transporter, have a shorter span and a longer tip chord than the two lower wings (compare Figures 7 and 8). The root chord is the same length for all four wings.

25X1



REFERENCES



25X1

Requirement

C-517-84,853

IAS Project

050063 (31298-B)

INSTALLATION OR ACTIVITY NAME		COUNTRY	LYN COORDINATES	GEOGRAPHIC COORDINATES
Engineering Dimensions of the Guideline Mod 4 Missile		USSR	N/A	N/A
CATEGORY	BE NUMBER	COMIREX NO.	INTETB NO.	
N/A	N/A	N/A	N/A	
MAP REFERENCE				
N/A				
LATEST IMAGERY USED			CONFIGURATION DATE (IF REQUIRED)	
Moscow Parade Photography, November 1967			N/A	

NOTE: This report was prepared in direct support of the Central Intelligence Agency. By agreement with USAIIC it will serve as an Interim Basic Imagery Interpretation Report.

Approved For Release 2003/08/05 : CIA-RDP02T06408R000400010059-2

SECRET

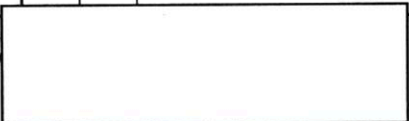
25X1

RECORD COPY	COPY NO.	PUB. DATE	LOCATION	MASTER	DATE RECEIVED	LOCATION											
DISPOSITION DATE(S)				STOCK LEVEL	MINIMUM 1	MAXIMUM 6											
CUT TO COPIES	DATE	CUT TO COPIES	DATE	COPIES DESTROYED													
CUT TO COPIES	DATE	CUT TO COPIES	DATE														
CUT TO COPIES	DATE	MASTER	DATE														
DATE			RECEIVED OR ISSUED			NUMBER OF COPIES			DATE			RECEIVED OR ISSUED			NUMBER OF COPIES		
MO.	DAY	YR.	REC'D	ISS'D	BAL	MO.	DAY	YR.	REC'D	ISS'D	BAL	REC'D	ISS'D	BAL			
8	12	68			6												
8	26	68								2	4						
9	19	68								4	0						
1	31	77															

TITLE NPIC  
DDI/IAR 91002

July 1968

SE  
S/



13

25X1



LIST OF ILLUSTRATIONS

	<u>Page</u>		<u>Page</u>
Figure 1. Selected Views of Guideline Mod 4. . . . .	3	Figure 14. Guideline Mod 4, Fairing on Underside of Missile. . . . .	16
Figure 2. Guideline Mod 4, Moscow Parade Photography . . . . .	4	Figure 15. Guideline Mod 4, Probable Fuel Line . . . . .	17
Figure 3. Guideline Mod 4, Left and Right Side Views . . . . .	5	Figure 16. Guideline Mod 4, Probable Fuel Line . . . . .	18
Figure 4. Guideline Mod 4, Top and Bottom Views. . . . .	6	Figure 17. Guideline Mod 4, Probable Hot Gas Bleed Line. . . . .	18
Figure 5. Guideline Mod 4, Nose Section. . . . .	7	Figure 18. Guideline Mod 4, Unidentified Fairing . . . . .	19
Figure 6. Selected Views of Nose Section, Guideline Mod 4. . . . .	8	Figure 19. Guideline Mod 4, Sustainer Launching Guide. . . . .	19
Figure 7. Guideline Mod 4, Upper Sustainer Wings . . . . .	9	Figure 20. Guideline Mod 4, Umbilical Disconnect Cover . . . . .	20
Figure 8. Guideline Mod 4, Lower Sustainer Wings . . . . .	10	Figure 21. Guideline Mod 4, Control Fin Locking Device . . . . .	21
Figure 9. Guideline Mod 4, Front View of Sustainer and Main Sustainer Wings . . . . .	11	Figure 22. Guideline Mod 4, Booster Fin. . . . .	22
Figure 10. Guideline Mod 4, Sustainer Control Surfaces. . . . .	12	Figure 23. Guideline Mod 4, Booster Front View . . . . .	23
Figure 11. Guideline Mod 4, Sustainer Control Surfaces Front View . . . . .	13	Figure 24. Guideline Mod 4, Booster Rear View Photography. . . . .	24
Figure 12. Guideline Mod 4, Interstage Adapter and Adapter Details. . . . .	14	Figure 25. Guideline Mod 4, Booster Nozzle and Fin Attachment Detail . . . . .	25
Figure 13. Guideline Mod 4, Probable Oxidizer Line. . . . .	15		

SECRET

DOI/IAE-91002

25X1

Approved For Release 2003/08/05 : CIA-RDP02T06408R000400010059-2

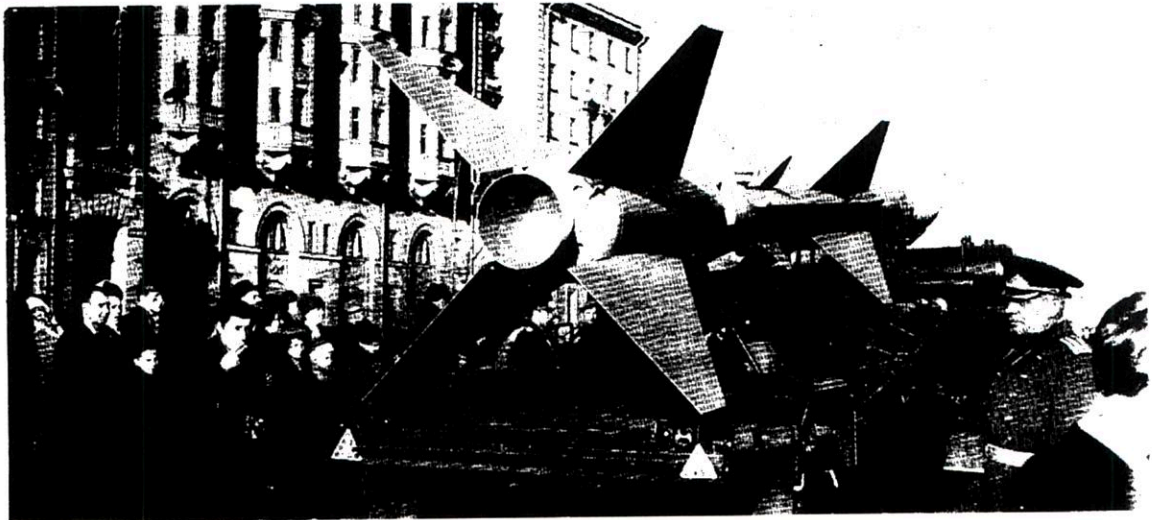


FIGURE 1. SELECTED VIEWS OF GUIDELINE MOD. 4

Approved For Release 2003/08/05 : CIA-RDP02T06408R000400010059-2

SECRET

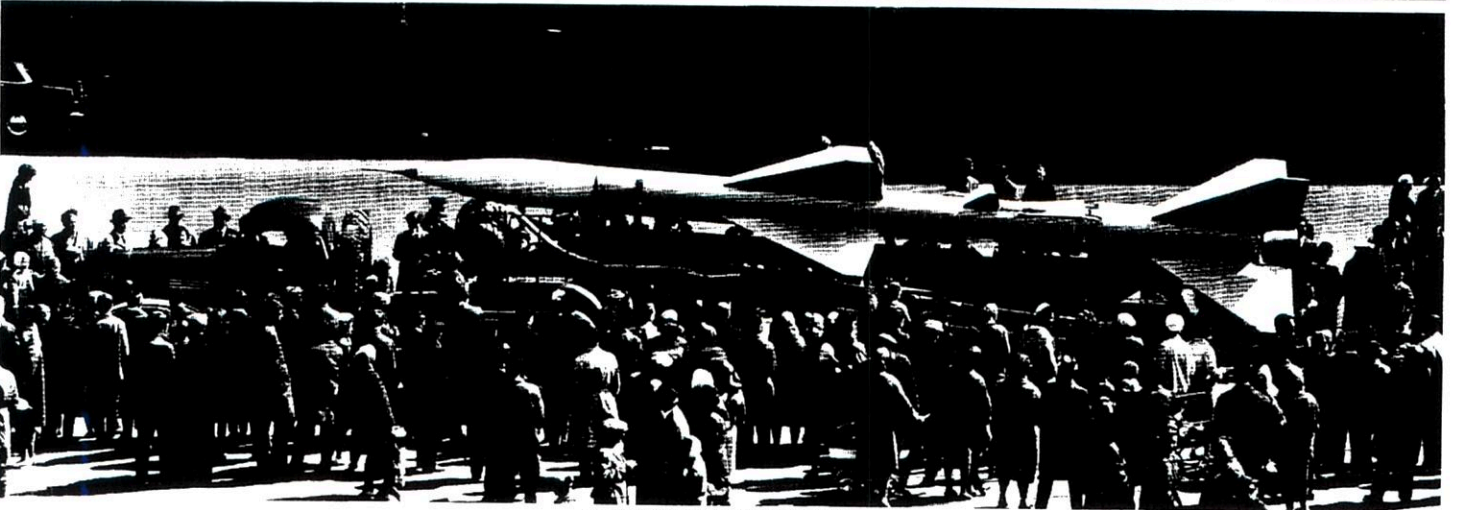
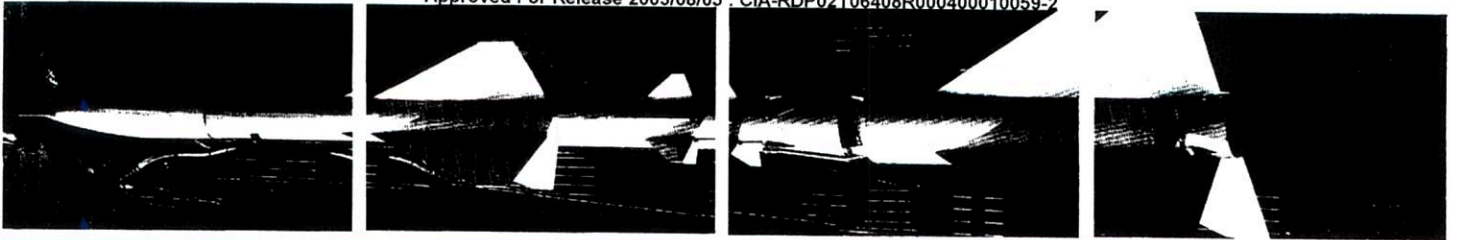
25X1

SECRET

DTIC/AR-01002

Approved For Release 2003/08/05 : CIA-RDP02T06408R000400010059-2

25X1



Approved For Release 2003/08/05 : CIA-RDP02T06408R000400010059-2

SECRET

25X1



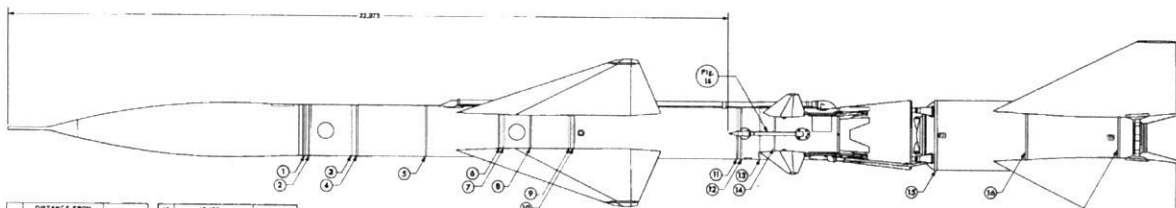


SECRET

DDI/1AR-91002

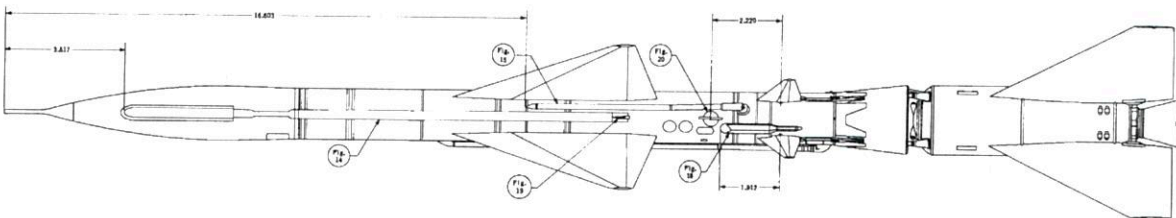
Approved For Release 2003/08/05 : CIA-RDP02T06408R000400010059-2

25X1



NO.	DISTANCE FROM TOE OF NOSE TO LEADING EDGE OF WILD-DOG	IN INCHES	NO.	IN INCHES	NO.	IN INCHES
1	0.000	0.000	14	23.913	16	0.000
2	0.750	0.000	15	24.000	17	0.000
3	10.870	0.000	16	24.000	18	0.000
4	12.000	0.000	17	24.000	19	0.000
5	13.000	0.000	18	24.000	20	0.000
6	14.000	0.000	19	24.000	21	0.000
7	15.000	0.000	20	24.000	22	0.000
8	16.000	0.000	21	24.000	23	0.000
9	17.000	0.000	22	24.000	24	0.000

TOP VIEW  
SCALE N" = 1" = 01"



BOTTOM VIEW  
SCALE N" = 1" = 01"

Dimensions in Feet

Accuracy - Linear Distance - 2% or 0.20 ft, whichever is Greater. Angles - One Degree.

Approved For Release 2003/08/05 : CIA-RDP02T06408R000400010059-2

SECRET

25X1

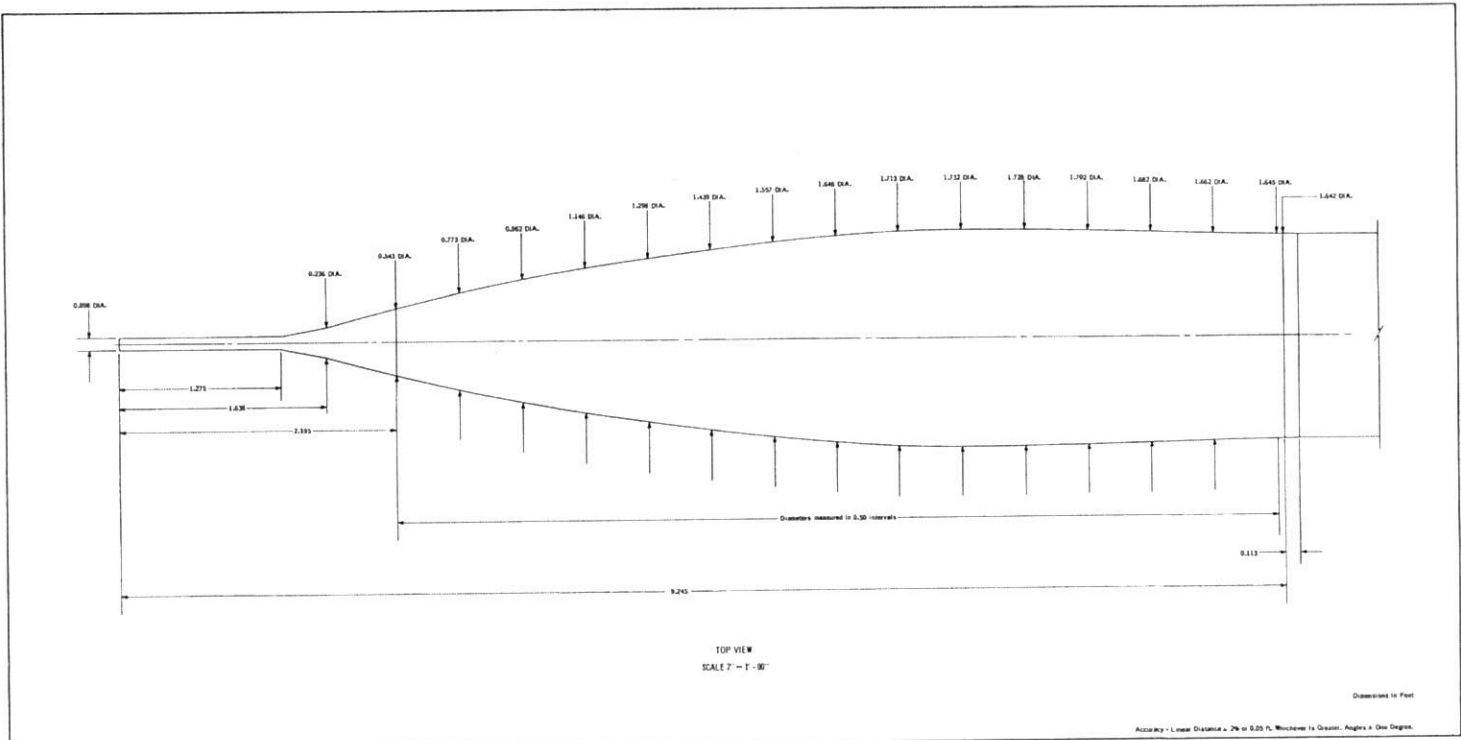


FIGURE 5. GUIDELINE MOD 4, NOSE SECTION.

SECRET

DD FORM 91002

25X1

Approved For Release 2003/08/05 : CIA-RDP02T06408R000400010059-2

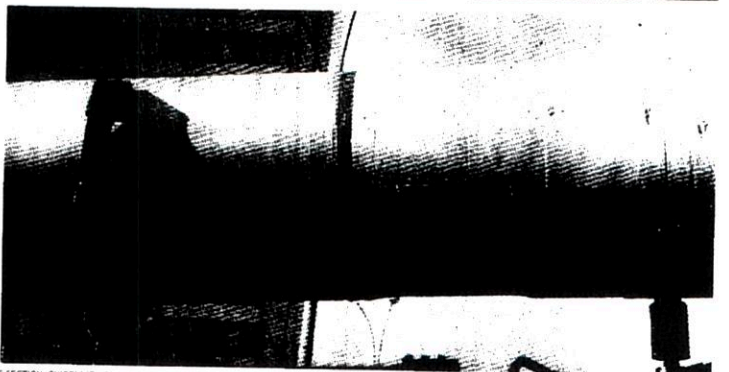
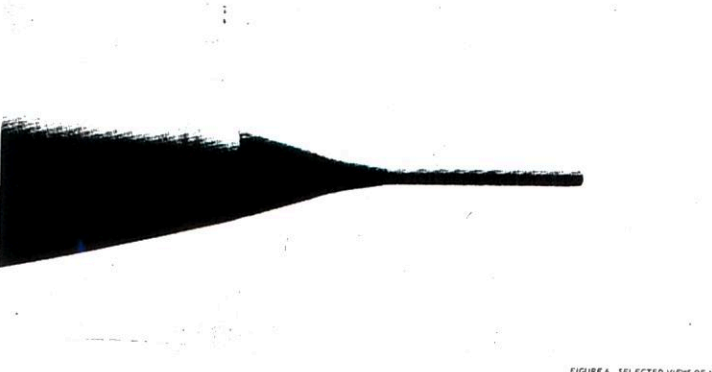
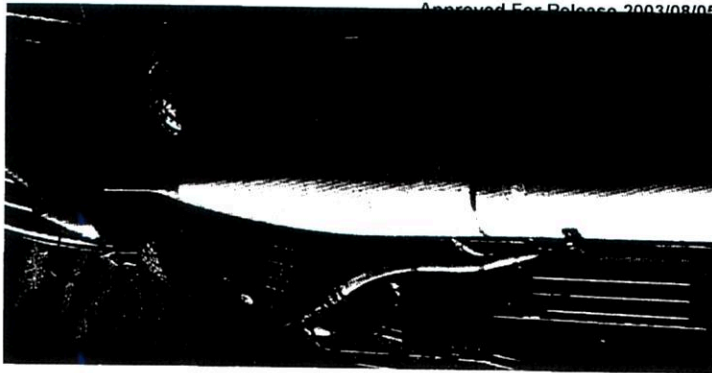


FIGURE 4. SELECTED VIEWS OF NOSE SECTION, GUIDELINE WOOD 4

Approved For Release 2003/08/05 : CIA-RDP02T06408R000400010059-2

SECRET

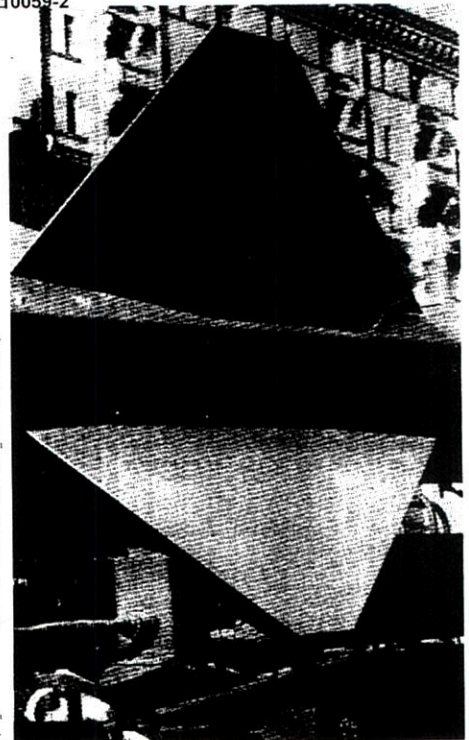
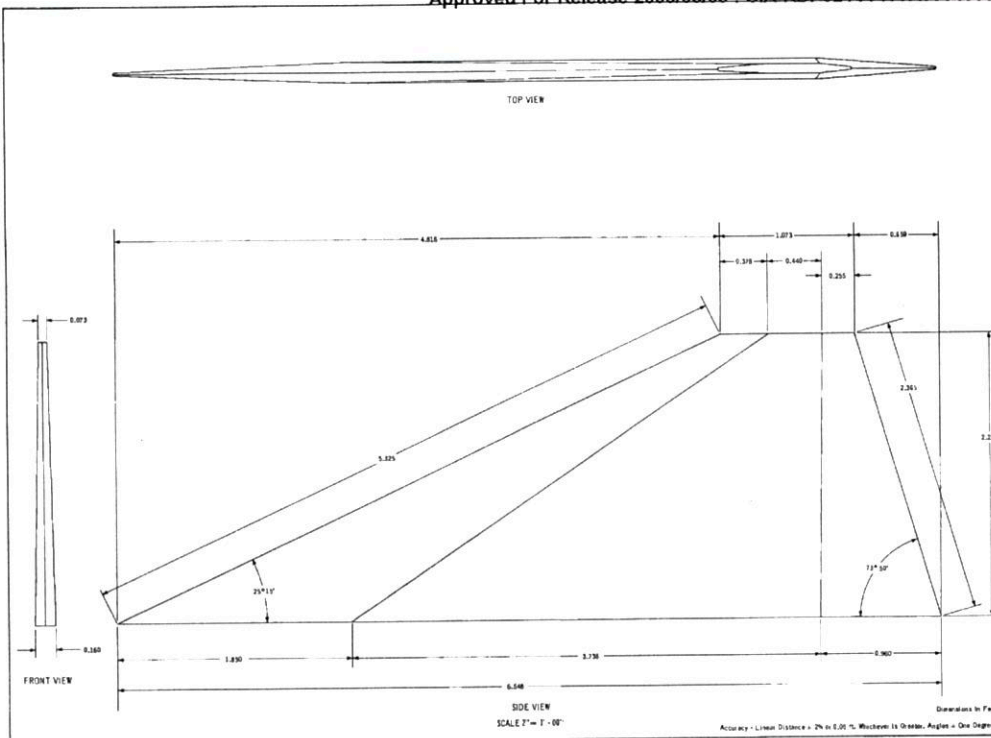
25X1

SECRET

Approved For Release 2003/08/05 : CIA-RDP02T06408R000400010059-2

LE11AR-91002

25X1



Approved For Release 2003/08/05 : CIA-RDP02T06408R000400010059-2

SECRET

25X1

SECRET

Approved For Release 2003/08/05 : CIA-RDP02T06408R000400010059-2

DDI/IAR-91002

25X1

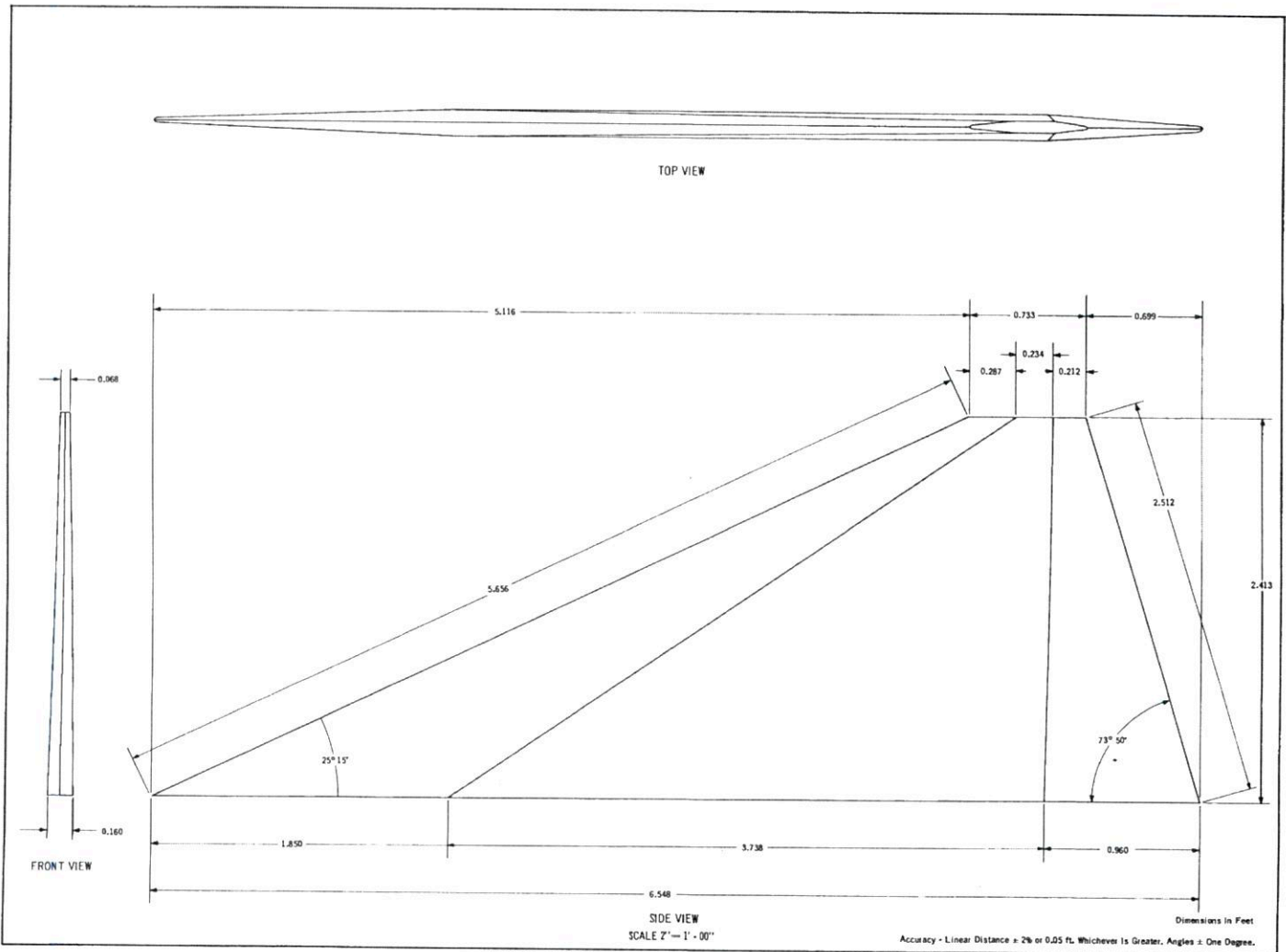


FIGURE 8. GUIDELINE MOD 4. LOWER SUSTAINER WINGS.

SECRET

Approved For Release 2003/08/05 : CIA-RDP02T06408R000400010059-2

25X1

SECRET

Approved For Release 2003/08/05 : CIA-RDP02T06408R000400010059-2  
IMAGERY ANALYSIS SERVICE

DDI/IAR-91002

25X1

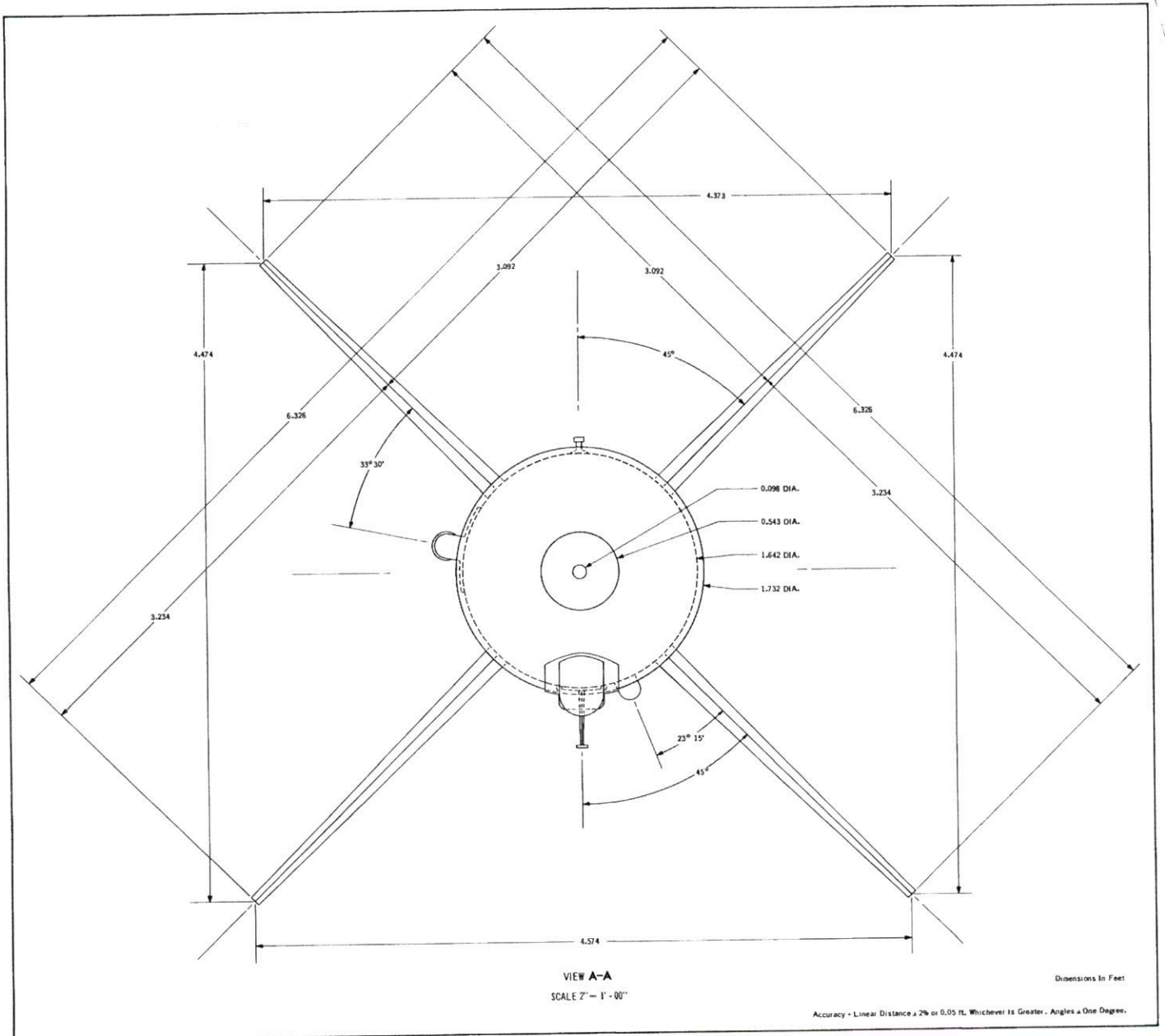


FIGURE 9. GUIDELINE MOD 4, FRONT VIEW OF SUSTAINER AND MAIN SUSTAINER WINGS.

-11-  
SECRET

Approved For Release 2003/08/05 : CIA-RDP02T06408R000400010059-2

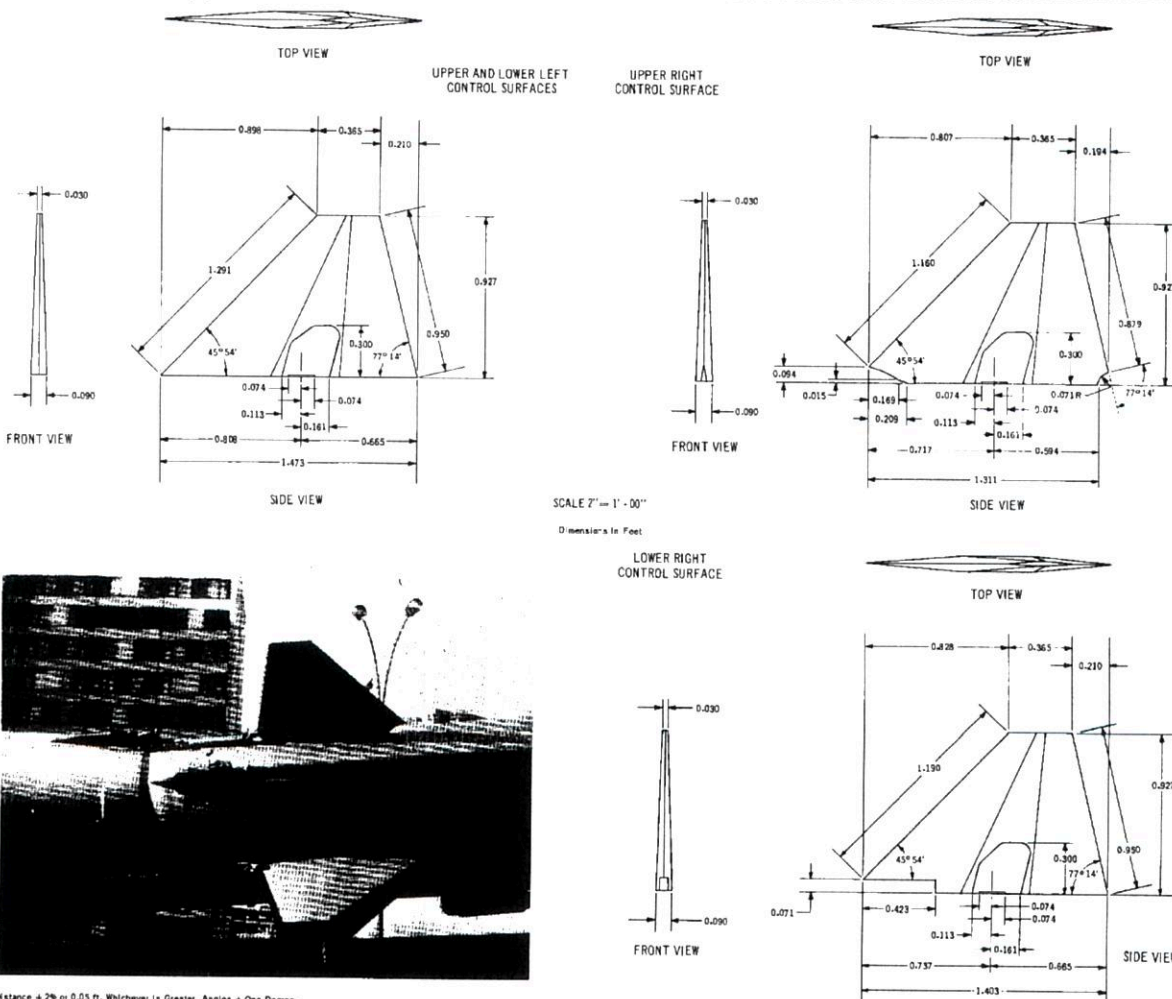
25X

SECRET

DD FORM 1002

25X1

Approved For Release 2003/08/05 : CIA-RDP02T06408R000400010059-2



Accuracy - Linear Distance ± 2% or 0.05 ft. Whichever is Greater. Angles ± One Degree.

FIGURE 10. GUIDELINE MOD 4, SUSTAINER CONTROL SURFACES.

Approved For Release 2003/08/05 : CIA-RDP02T06408R000400010059-2

SECRET

25X1

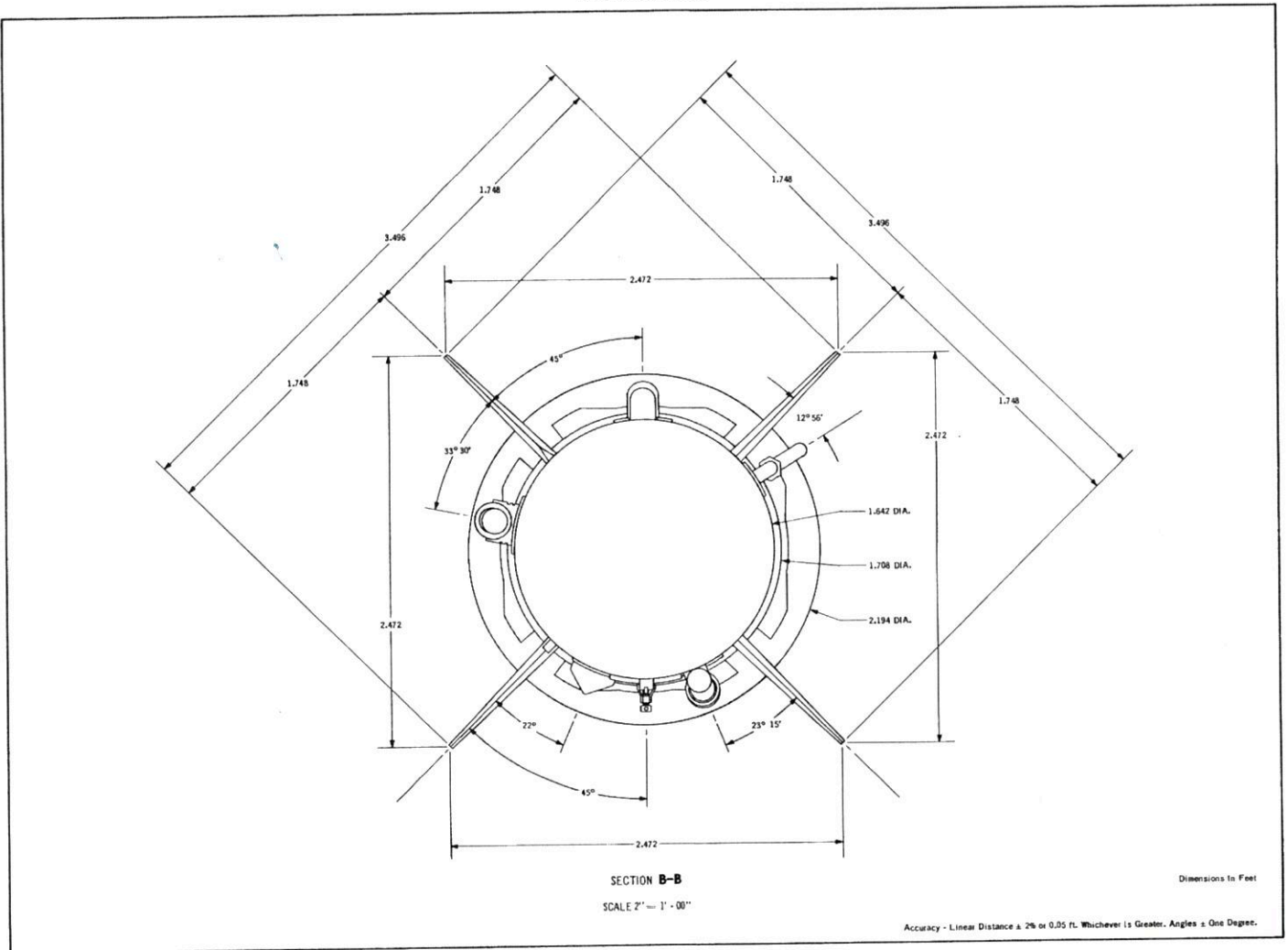


FIGURE 11. GUIDELINE MOD 4, SUSTAINER CONTROL SURFACES FRONT VIEW.



SECRET

DDI/AR-91C02

25X1

Approved For Release 2003/08/05 : CIA-RDP02T06408R000400010059-2

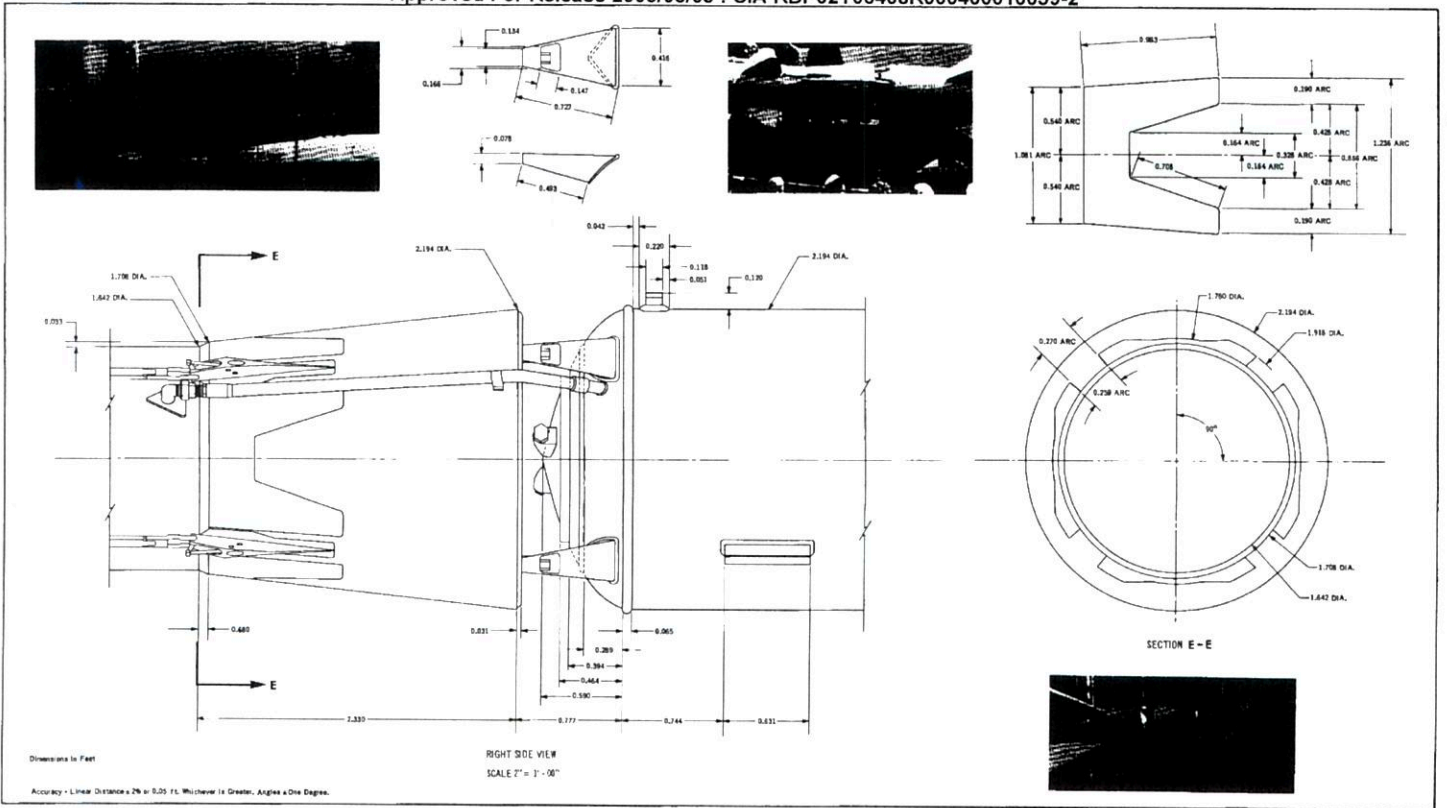


FIGURE 12. GUIDELINE W00 4 INTERSTAGE ADAPTER AND ADAPTER DETAILS

Approved For Release 2003/08/05 : CIA-RDP02T06408R000400010059-2

SECRET

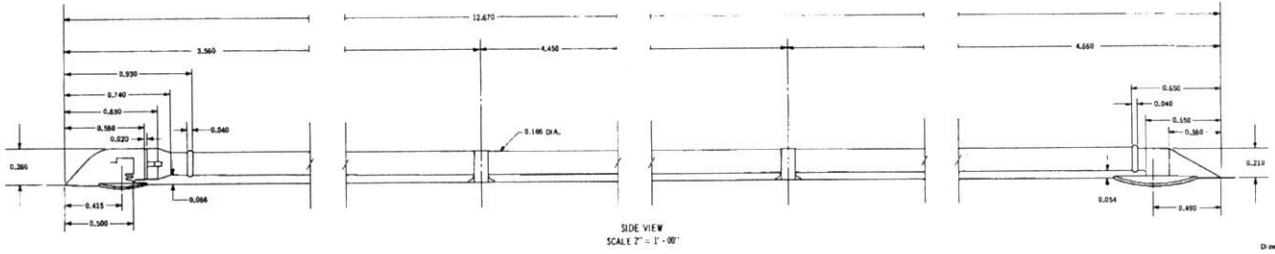
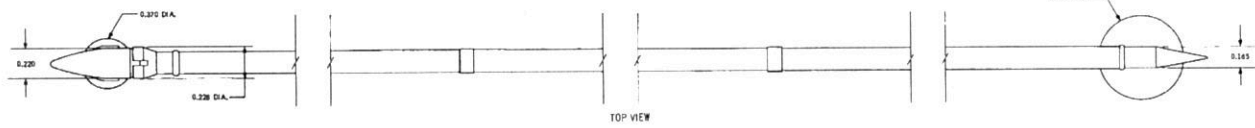
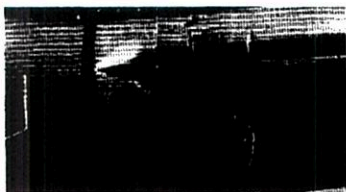
25X1

SECRET

DCI/EAR-91002

25X1

Approved For Release 2003/08/05 : CIA-RDP02T06408R000400010059-2



SCALE 2" = 1" - 00'

Dimensions in Feet

Accuracy - Linear Dimensions  $\pm 0.01$  in. Whichever is Greater, Angles  $\pm$  One Degree.

FIGURE 13 - GUIDELINE MOD 4, PROBABLE OXIDIZER LINE.  
Approved For Release 2003/08/05 : CIA-RDP02T06408R000400010059-2

SECRET

25X1

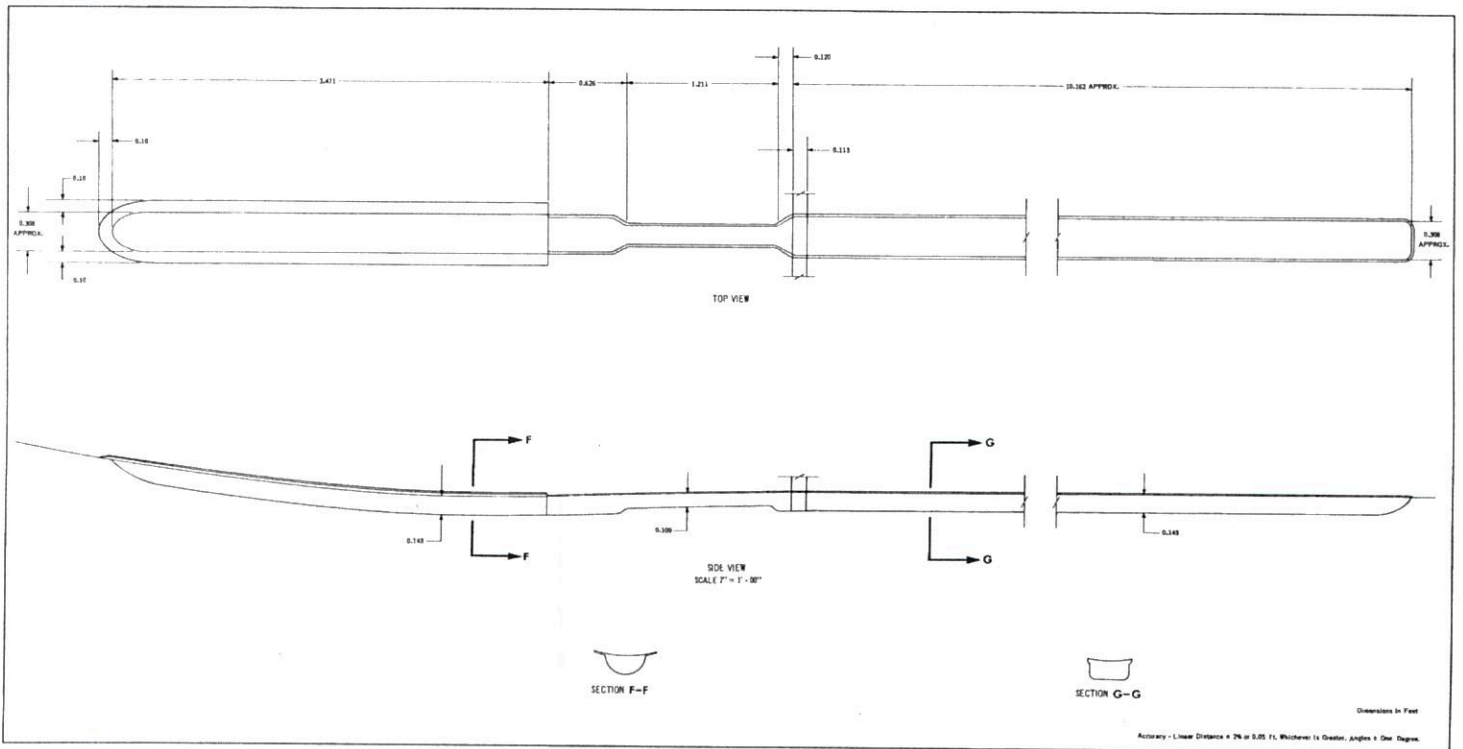


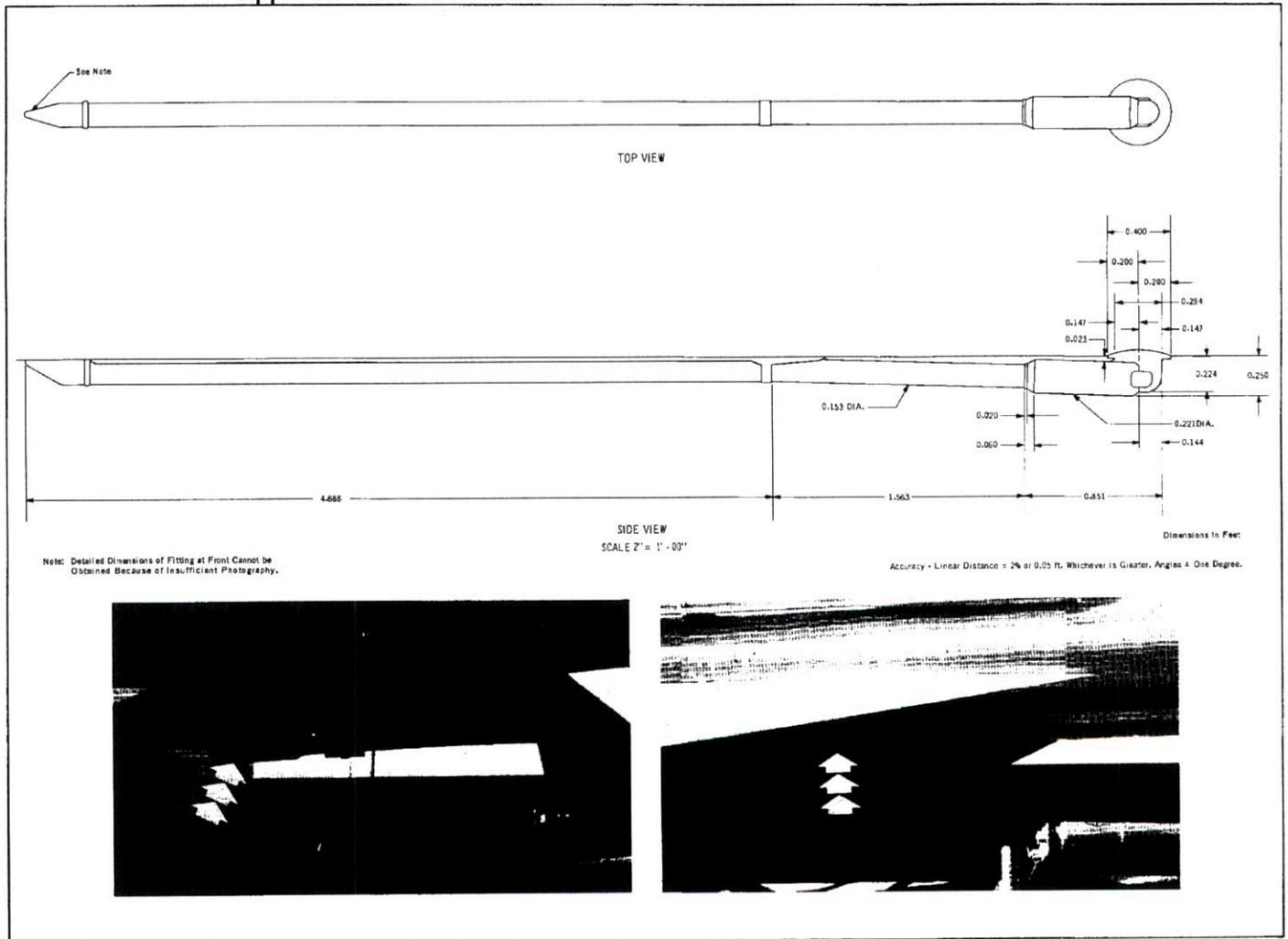
FIGURE 14. GUIDELINE MOD 4, FAIRING ON UNDERSIDE OF MISSILE.

SECRET

DDI/1AR-91002

25X1

Approved For Release 2003/08/05 : CIA-RDP02T06408R000400010059-2



Approved For Release 2003/08/05 : CIA-RDP02T06408R000400010059-2

SECRET

25X1

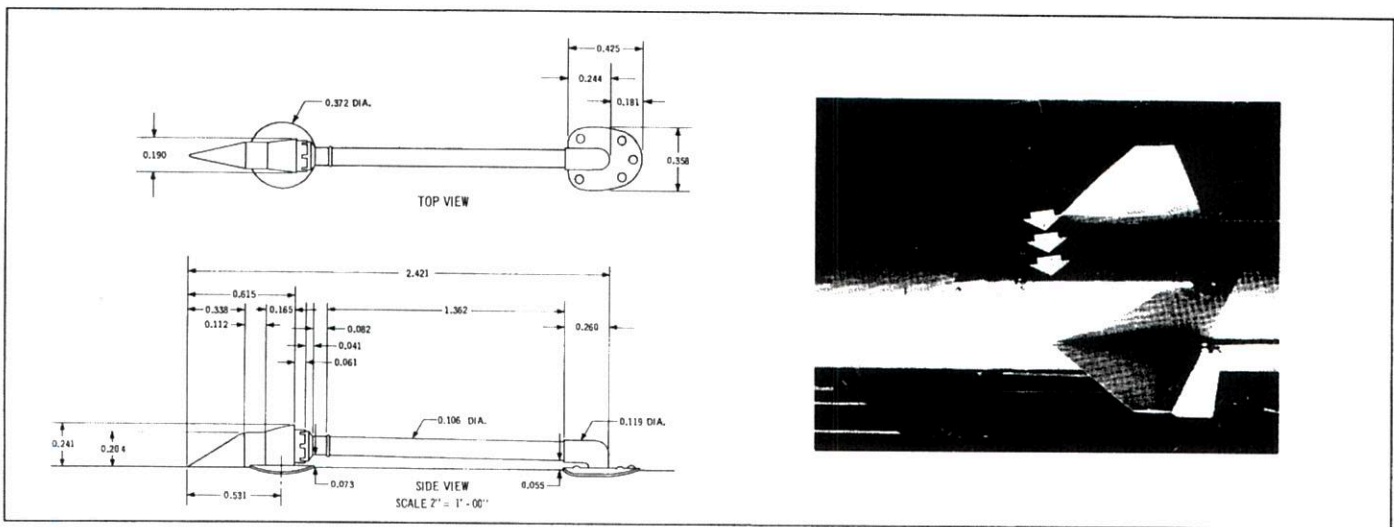


FIGURE 16. GUIDELINE MOD 4, PROBABLE FUEL LINE.

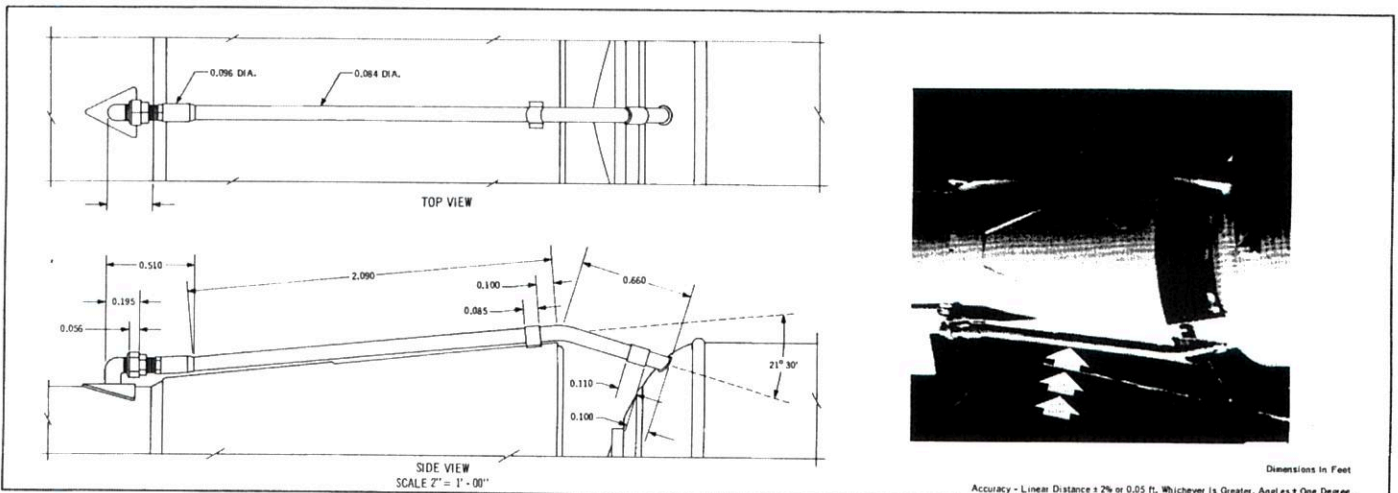


FIGURE 17. GUIDELINE MOD 4, PROBABLE HOT GAS BLEED LINE.

Dimensions in Feet  
 Accuracy - Linear Distance ± 2% or 0.05 ft. Whichever is Greater, Angles ± One Degree.

SECRET

DDI/1AH-91002

25X1

Approved For Release 2003/08/05 : CIA-RDP02T06408R000400010059-2

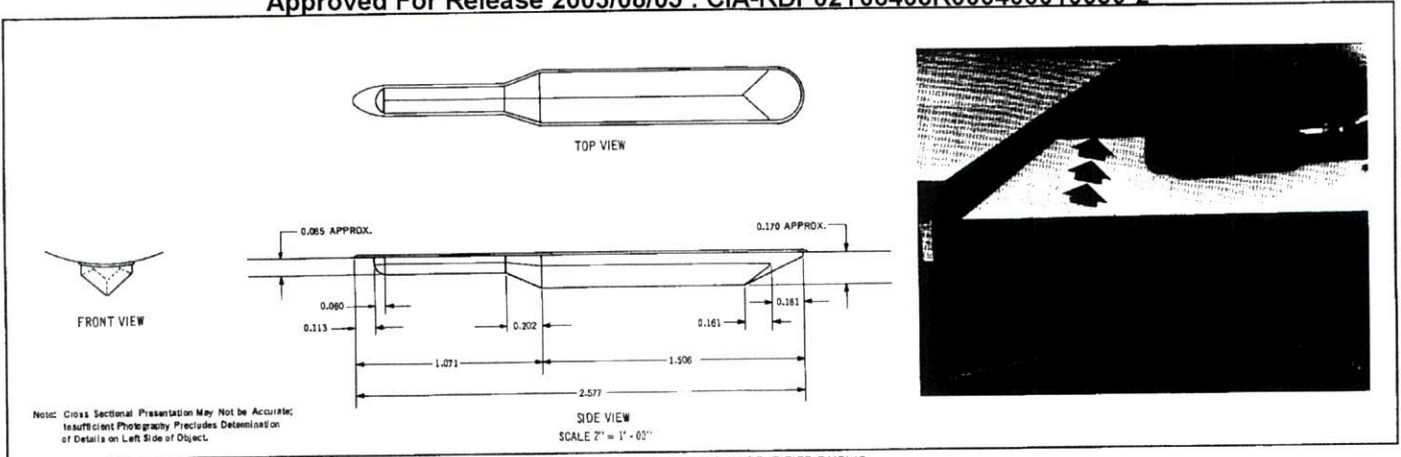


FIGURE 18. GUIDELINE MOD 4, UNIDENTIFIED FAIRING.

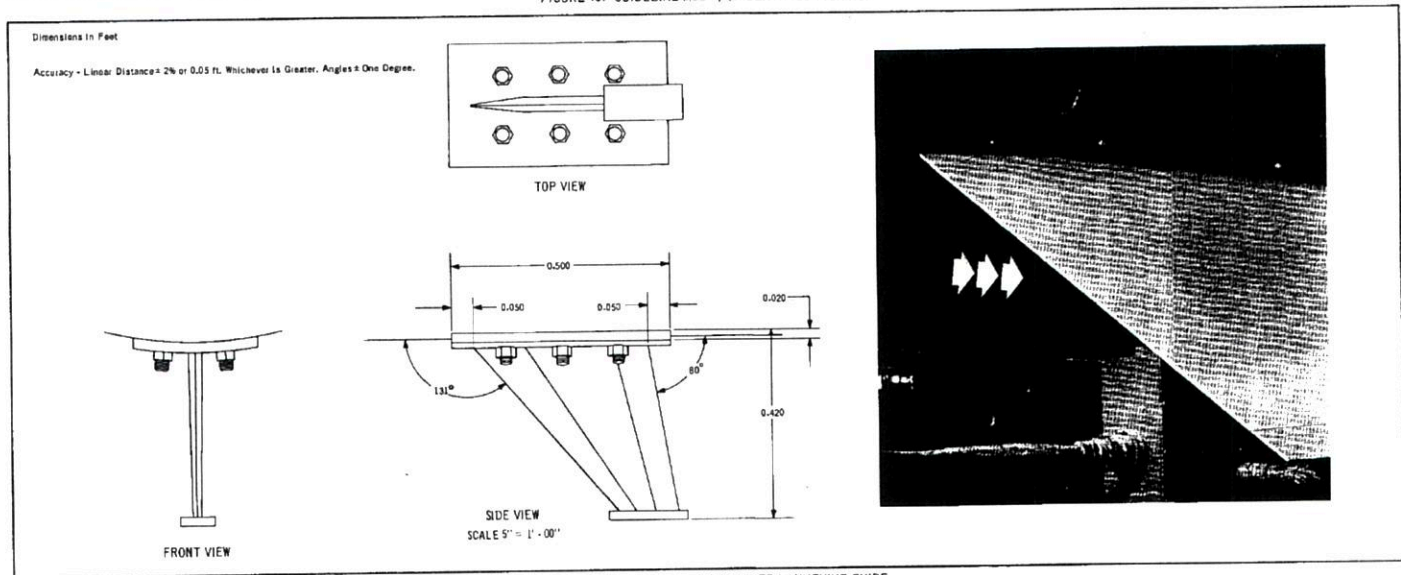


FIGURE 19. GUIDELINE MOD 4, SUSTAINER LAUNCHING GUIDE.

Approved For Release 2003/08/05 : CIA-RDP02T06408R000400010059-2

SECRET

25X1

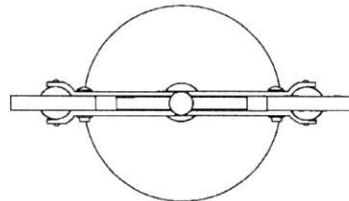
SECRET

DDI / IAR-91002

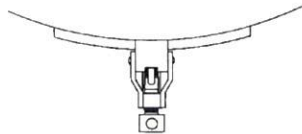
25X1

IMAGERY ANALYSIS SERVICE

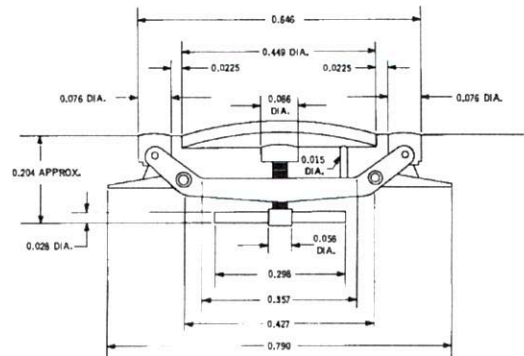
Approved For Release 2003/08/05 : CIA-RDP02T06408R000400010059-2



TOP VIEW



FRONT VIEW



SIDE VIEW

SCALE 5" = 1" - 00"

Dimensions In Feet

Accuracy - Linear Distance = 2% or 0.06 ft. Whichever is Greater. Angles = One Degree.

FIGURE 20. GUIDELINE MOD 4. UMBILICAL DISCONNECT COVER.

Approved For Release 2003/08/05 : CIA-RDP02T06408R000400010059-2

SECRET

25X1

SECRET

IMAGERY ANALYSIS SERVICE

DDI/1AR-91002

25X1

Approved For Release 2003/08/05 : CIA-RDP02T06408R000400010059-2

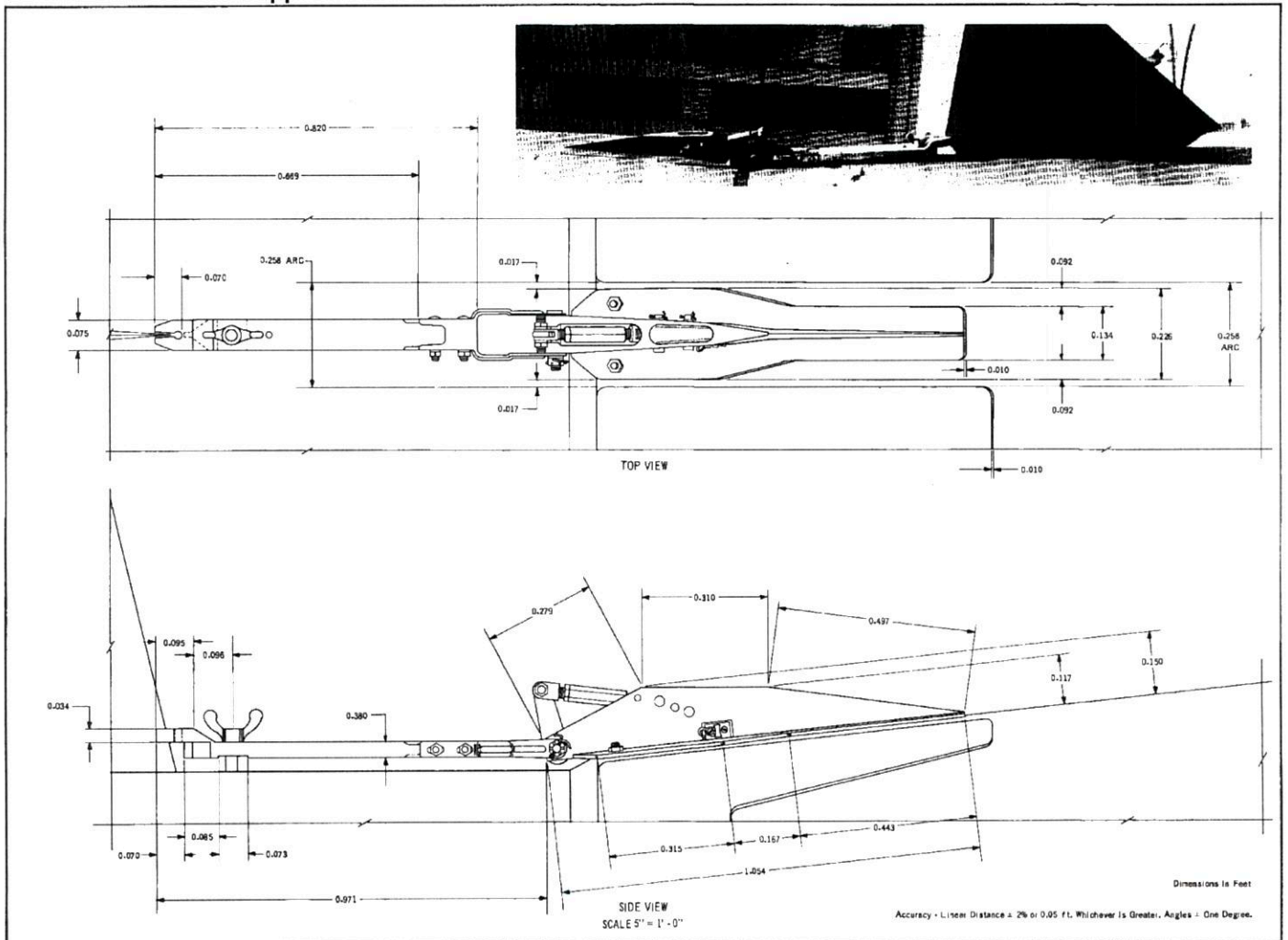


FIGURE 21. GUIDELINE NO. 8 CONTROL FIN LOCKING DEVICE

Approved For Release 2003/08/05 : CIA-RDP02T06408R000400010059-2

SECRET

25X1



SECRET

Approved For Release 2003/08/05 : CIA-RDP02T06408R000400010059-2

DDI/1AR-91002

25X1

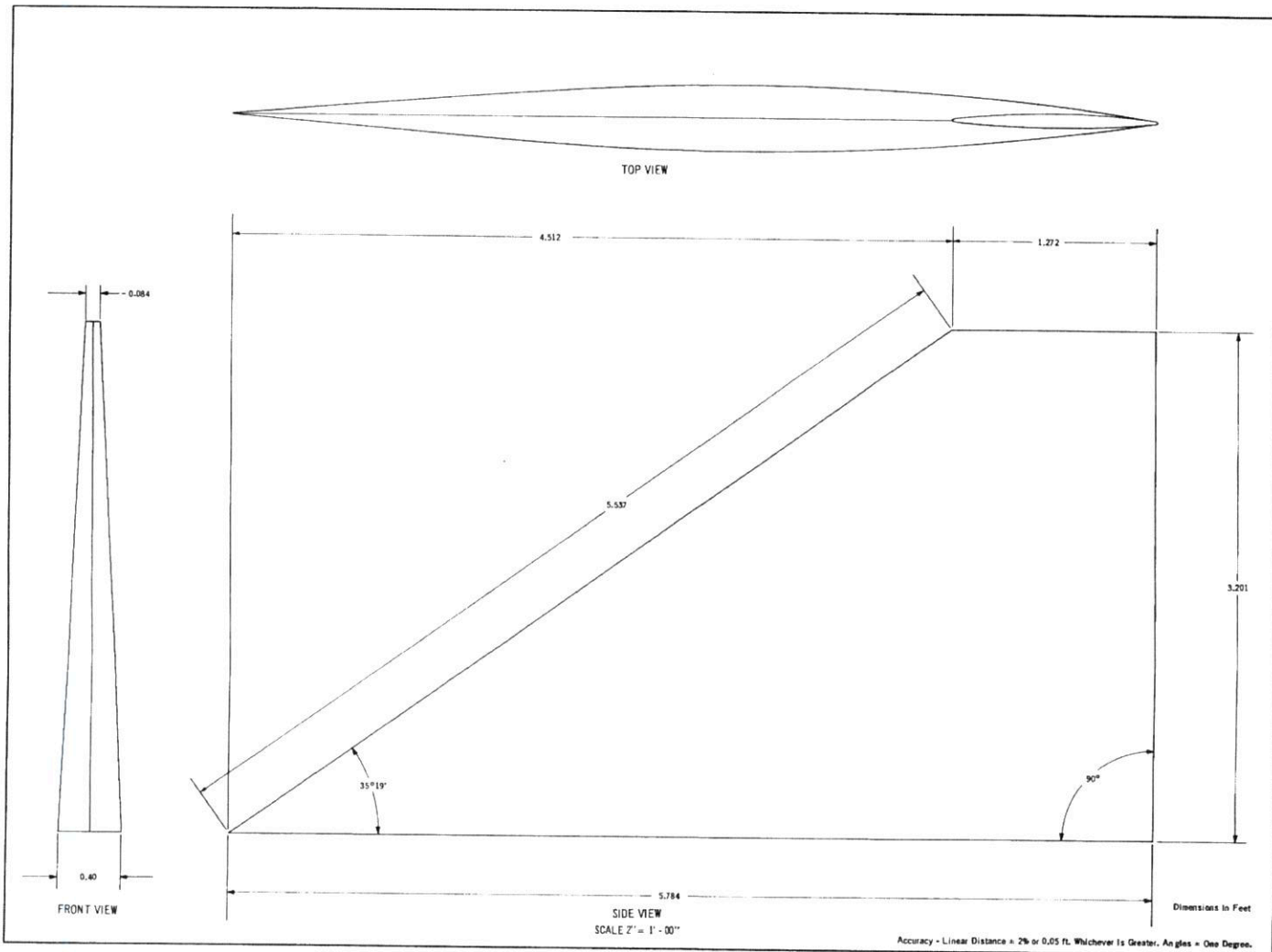


FIGURE 22. GUIDELINE MOD 4, BOOSTER FIN.

SECRET

Approved For Release 2003/08/05 : CIA-RDP02T06408R000400010059-2

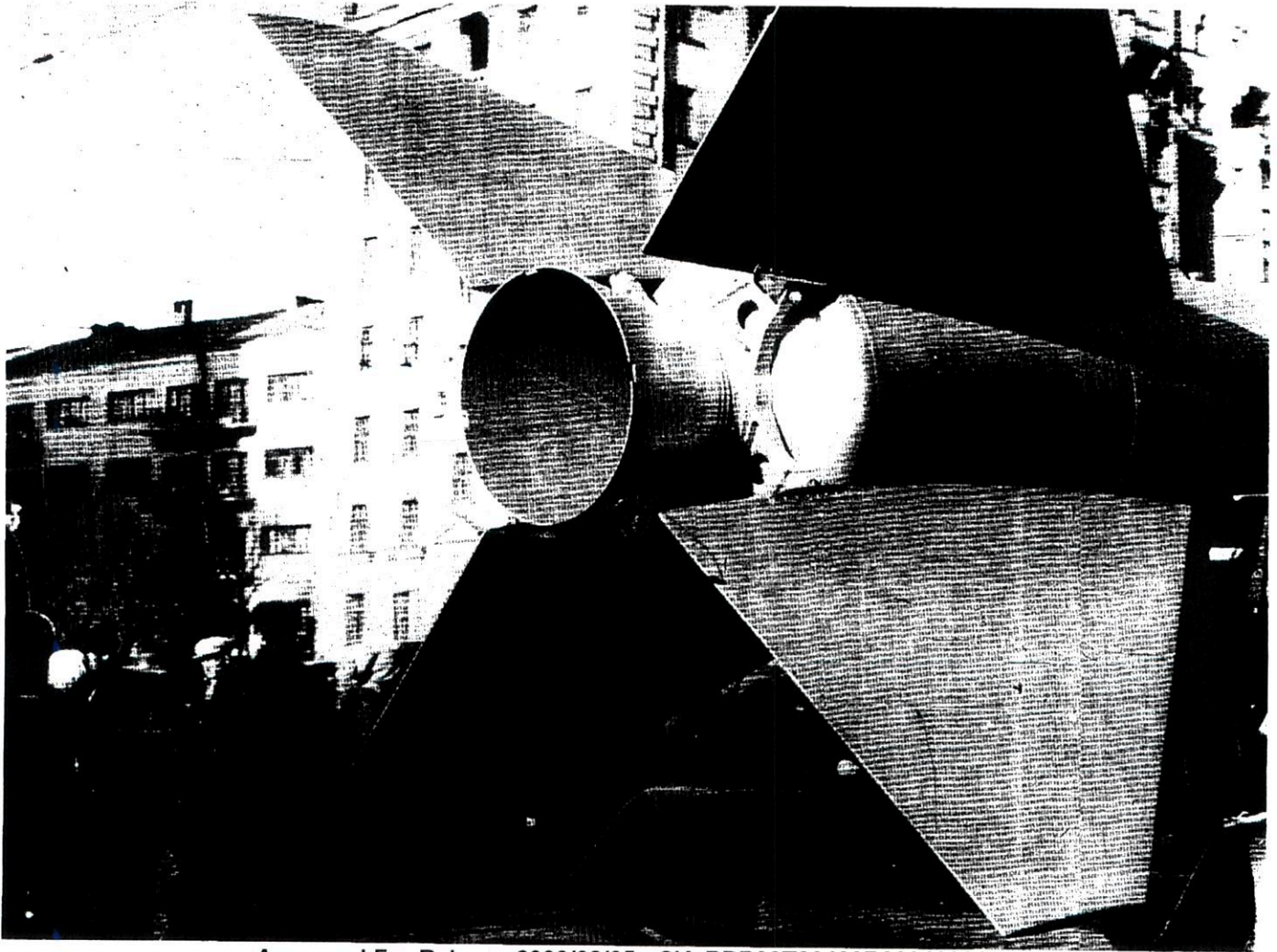


25X1

SECRET

DOI/TAR-91002

Approved For Release 2003/08/05 : CIA-RDP02T06408R000400010059-2



Approved For Release 2003/08/05 : CIA-RDP02T06408R000400010059-2

SECRET

25X1



**Secret**

Approved For Release 2003/08/05 : CIA-RDP02T06408R000400010059-2

**Secret**

Approved For Release 2003/08/05 : CIA-RDP02T06408R000400010059-2

---



**NATIONAL  
SECURITY  
ARCHIVE**

This document is from the holdings of:

The National Security Archive

Suite 701, Gelman Library, The George Washington University

2130 H Street, NW, Washington, D.C., 20037

Phone: 202/994-7000, Fax: 202/994-7005, [nsarchiv@gwu.edu](mailto:nsarchiv@gwu.edu)